

Article

# Multi-Objective Fuzzy Logic-Based Energy Management System for Microgrids with Battery and Hydrogen Energy Storage System

Francisco José Vivas <sup>1,\*</sup>, Francisca Segura <sup>1</sup>, José Manuel Andújar <sup>1</sup>, Adriana Palacio <sup>2</sup>,  
Jaime Luis Saenz <sup>2</sup>, Fernando Isorna <sup>2</sup> and Eduardo López <sup>2</sup>

<sup>1</sup> Department of Electronic Engineering, Computer Systems and Automatic, University of Huelva, 21007 Huelva, Spain; francisca.segura@diesia.uhu.es (F.S.); andujar@diesia.uhu.es (J.M.A.)

<sup>2</sup> Instituto Nacional de Técnica Aeroespacial, INTA (Spanish Institute Aerospace Technique); Ctra. San Juan del Puerto, Km. 33, 21130 Mazagón, Spain; palacioca@inta.es (A.P.); saenzcj@inta.es (J.L.S.); isornaf@inta.es (F.I.); lopezge@inta.es (E.L.)

\* Correspondence: francisco.vivas@diesia.uhu.es

Received: 19 May 2020; Accepted: 26 June 2020; Published: 30 June 2020



**Abstract:** This paper proposes a fuzzy logic-based energy management system (EMS) for microgrids with a combined battery and hydrogen energy storage system (ESS), which ensures the power balance according to the load demand at the time that it takes into account the improvement of the microgrid performance from a technical and economic point of view. As is known, renewable energy-based microgrids are receiving increasing interest in the research community, since they play a key role in the challenge of designing the next energy transition model. The integration of ESSs allows the absorption of the energy surplus in the microgrid to ensure power supply if the renewable resource is insufficient and the microgrid is isolated. If the microgrid can be connected to the main power grid, the freedom degrees increase and this allows, among other things, diminishment of the ESS size. Planning the operation of renewable sources-based microgrids requires both an efficient dispatching management between the available and the demanded energy and a reliable forecasting tool. The developed EMS is based on a fuzzy logic controller (FLC), which presents different advantages regarding other controllers: It is not necessary to know the model of the plant, and the linguistic rules that make up its inference engine are easily interpretable. These rules can incorporate expert knowledge, which simplifies the microgrid management, generally complex. The developed EMS has been subjected to a stress test that has demonstrated its excellent behavior. For that, a residential-type profile in an actual microgrid has been used. The developed fuzzy logic-based EMS, in addition to responding to the required load demand, can meet both technical (to prolong the devices' lifespan) and economic (seeking the highest profitability and efficiency) established criteria, which can be introduced by the expert depending on the microgrid characteristic and profile demand to accomplish.

**Keywords:** energy management system; fuzzy logic controller; renewable source-based microgrid; battery and hydrogen energy storage system

## 1. Introduction

Renewable energy-based microgrids are receiving increasing interest in the research community, since they play a key role in the challenge of designing the next energy transition model [1]. However, the stochastic character exhibited by the most important renewable energy sources (RES), such as photovoltaic (PV) and wind, represents a huge disadvantage for the stability, security, and reliability of microgrids. To solve this problem, the integration of energy storage systems (ESS) is required to

allow the absorption of the energy surplus, and to ensure power supply when the renewable resource is insufficient.

Regarding the ESS technology, the combined use of battery-and-hydrogen ESS is a promising solution, especially if hydrogen is produced in the microgrid itself and exclusively through renewable resources [2]. This hybrid ESS can be used not only to meet the load demand, but it can also be managed with economic interests. Indeed, the ESSs can participate in the electrical market by purchasing the energy from the main power grid during the off-peak hours (cheaper energy), storing it, and selling it later to the main power grid during the peak demand hours (more expensive energy).

On the other hand, in these convulsive times (COVID-19 pandemic), where the world population is obliged to be confined to preserve global health, good development of the productive activity and entertainment (teleworking, e-commerce, social networks, audiovisual contents, e-learning, etc.) inevitably depends, on the last instance, on a reliable electrical supply. Grid disconnections are detrimental to both customers and providers [3–5].

After an unexpected interruption, if a microgrid reacts to the new working conditions in order to restore the normal expectations of the users, it receives the name of *resilient* microgrid [6,7]. The use of combined battery-and-hydrogen ESS in resilient microgrids offers multiple advantages, like [8]: (1) high electric efficiency (> 45%); (2) overall efficiency of 85–93%; (3) low noise (silent operation); (4) reduction of air pollution (low emission); (5) high availability (24/7); (6) dispatchable with the capability to follow the load.

Finding a commitment between the size of the renewable microgrid, its ESS, and the quality and supply required towards the user, is not an easy task. Today, regardless of the environmental benefits, 100% renewable networks are still expensive, due especially to the large size that this type of grid requires, due to the intermittency of renewable resources (it is the case of solar and wind energy). Therefore, several authors agree that in microgrids, an energy management system (EMS) is essential for optimal use of these distributed energy resources in intelligent, secure, reliable, and coordinated ways [9]. The planning of the operation of this type of grid based on renewable energy sources requires both an efficient dispatching for the available and the demanded energy, and a reliable short- and long-term forecasting tool [10,11]. That is, the management of renewable energy-based microgrids brings significant challenges that need to be addressed with advanced control techniques [12].

Having already demonstrated the relevance of EMS in microgrids, Zia et al. [9] classified the EMS solutions into six categories: (1) classical techniques, such as linear and nonlinear programming methods, dynamic programming, and rule-based methods; (2) EMSs based on meta-heuristic approaches, such as those based on genetic and swarm optimization; (3) EMSs based on artificial intelligent methods such as fuzzy logic and neural networks or multi-agent systems; (4) EMSs based on stochastic and robust programming approaches; (5) EMSs based on model predictive control (MPC); (6) hybrid EMSs approaches.

However, EMS developers not only have to decide which technique to use, but also establish management criteria. In this sense, Vivas et al. [13] deduced that energy management strategies in renewable microgrids can be classified according to the three following energy distribution criteria: (1) to ensure the demand, (2) to meet technical decision factors, and (3) to look for the best economic return. Nevertheless, in the three cases, the solutions for the EMS found in the literature are based on simple heuristic strategies based on hysteresis operation modes [14–16], fuzzy logic [17–19], and model-based control algorithms aimed to optimize multi-objective functions [20–22]. Regarding their characteristics, the major inconvenience of the hysteresis operation mode is its inability to allow partial-load operation of the devices [23–25], while the model-based control requires explicit and detailed models that faithfully describe the plant behavior.

Fuzzy logic has demonstrated for decades (end of the 20th century) its innate ability to solve complex modeling and control problems, both from an analytical [26] and heuristic [27] perspective. The well-known Mamdani-type fuzzy inference system [28] that makes it possible to carry out practical controllers based on linguistic (heuristic) rules, without the need to have a precise plant model,

has attracted a lot of interest towards the field of renewable energy systems, since linguistic rules can simplify the control of these complex systems [29]. By this kind of fuzzy control system, the part-load operation of hydrogen-based systems like fuel cells [29,30] and electrolyzers [31] is technically feasible. For all these devices, the efficiency is increased by part-load operation, so it is expected that the microgrid will become more efficient.

Based on the literature review, fuzzy logic can be used not only in the development of the microgrid EMS, but also in the definition of protection strategies and the establishment of decision rules. Based on this, Bukhari et al. [32] developed two different fuzzy systems to detect, classify, and locate the faults in microgrids, and Oliveira et al. [10] proposed a fuzzy-based methodology approach for microgrids under an islanded operation that aimed to maximize the number of supplied customers during a minimum period of time.

Regarding the scientific works that propose EMS based on fuzzy logic controllers, in [33] the stochastic nature of the solar energy collection was handled by the fuzzy logic system, which provides continuous control conditions, instead of direct digital control, where the boundaries are discontinuous.

On the other hand, Kamel et al. presented recently in [34] a comparative study to validate the results of the classic PI control with the results of a fuzzy control system. The controller must establish the fuel cell current reference on the basis of three input signals: the load power, PV power, and battery SOC. It is a simple controller that consists of eight fuzzy rules, and although the authors confirmed the PI controller is easier for implementation, they recognize future research should be focused on improving the system with regard to cost optimization.

In spite of the simplicity of these solutions, the non-use of optimization parameters based on equipment degradation, operation modes, or operating costs of the microgrid causes an inefficient solution from a technical and economic point of view.

On the other hand, technical criteria were included in the fuzzy logic-based EMS presented by Zhang et al. in [17]. The target was to use solar power to meet the power demand and the surplus to maximize the hydrogen production. This allowed for minimizing the usage of battery and therefore the overall microgrid's efficiency increased, and the battery lifespan was prolonged.

Fuzzy logic-based EMSs that include economic parameters can help to determine an optimal solution from an economic point of view. Thereby, El-Bidairi et al. proposed in [35] a multi-objective optimization technique for stand-alone microgrids which determines the optimal power generation scheduling and selects the optimal capacity of the ESSs with minimal operational cost. In this same line, the objective of the study carried out in [18] was to examine the effects of time-varying electricity prices on the performance of ESS for a grid-tied microgrid utilizing an optimized fuzzy logic controller (FLC). However, these economic solutions, with more global goals, do not determine a favorable operation for the involved devices due to not having enough technical criteria to avoid problems associated with different operating regimes.

Based on the above, the main contribution of this paper is the proposal of a multi-objective fuzzy logic-based EMS with Mandani-type structure and inference, for microgrids with combined battery-and-hydrogen ESS, which ensures the power balance according to the load demand, taking into account the improvement of microgrid performance from technical and economic points of view. The fuzzy logic approach is chosen since linguistic rules are interpretable and they can incorporate the knowledge that an expert has of the microgrid, which can simplify the management and control of it, given its complexity. In fact, the developed FLC combines the microgrid knowledge from experts and collected data to define the fuzzy rule bases. Then, the developed FLC, in addition to responding to the load demand, can meet both technical criteria (to prolong the devices' lifespan) and economic criteria (to reduce the electricity purchased from the main power grid and to improve the trade and profitability of the sale/purchase of energy). Additionally, the developed FLC considers the power balance forecast. In this case, the prediction model used to obtain the solar generation profile is based on the use of a multilayer neural network, and the demand profile model is based on a specific consumption profile proposed for a residential type application. Therefore, knowing the models of renewable production

and consumption profile, the power balance in the following sampling period can be calculated as the difference between both terms.

To highlight the novelty of the research, Table 1 summarizes the main characteristics of the authors' proposal in comparison with revised literature.

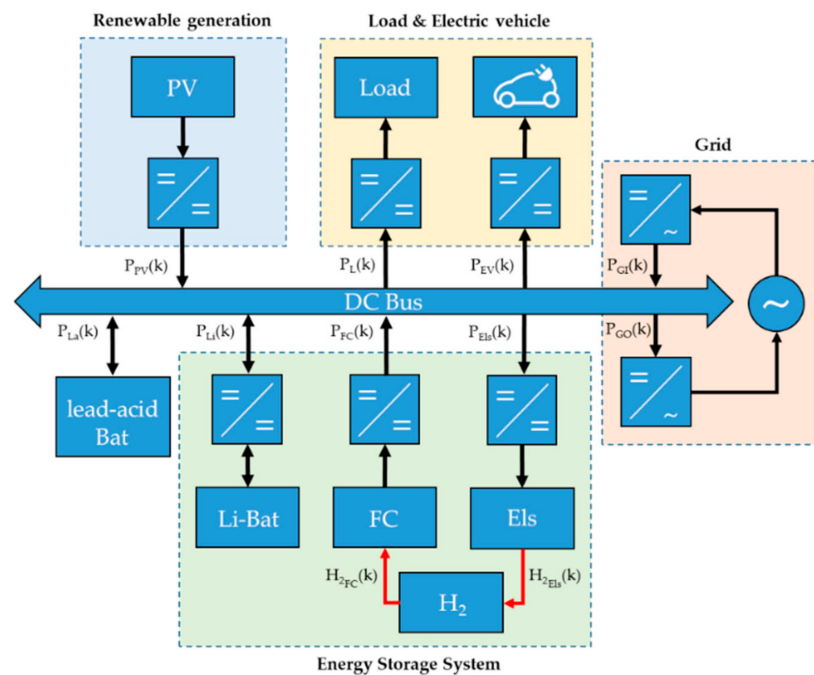
**Table 1.** Comparison of the findings of the proposed paper with previous scientific works.

Reference	Objective	Decision-Making	ESS	Power Balance Forecast	Operating Time
Authors' proposal	Power balance, Conservative use of ESS, Cost	Short- and long-term	Battery and Hydrogen	Yes	3 days (able to be extended)
[33,34]	Power balance	Short-term	Battery and Hydrogen	No	1 day
[17]	Power balance, Conservative use of Battery,	Short-term	Battery and Hydrogen	Yes	1 year
[35]	Power balance, Size ESS, Cost	Long-term	Battery	No	12 days
[18]	Power balance, Size ESS, Cost	Long-term	Battery and Hydrogen	No	7 days

This paper is organized as follows: Section 2 describes all the facilities, devices, and software that have been used to carry out the research. Section 3 develops step by step the fuzzy logic-based EMS, which will be further tested in Section 4. The results are discussed in Section 5, highlighting the principal aspects regarding the EMS functioning. Finally, in Section 6 the principal conclusions of the research are addressed.

## 2. Materials and Methods

The microgrid used to test the developed EMS is shown in Figure 1, found at the Spanish Institute of Aerospace Technology, (Spanish acronym: INTA), and it is based on the use of renewable generation and hybrid ESS based on batteries and hydrogen.



**Figure 1.** Residential-type microgrid.

The proposed configuration is designed to respond to a residential-type application, in which a bidirectional flow of energy is allowed between the renewable microgrid and the main power grid.

This configuration was chosen because it allows the development of different strategies in the field of the electricity market and, in the last instance, to get an end-consumer perspective.

In the microgrid scheme of Figure 1, renewable generation is given by a 5 kW<sub>p</sub> monocrystalline technology PV field, and the use of associated power electronics to supply to the DC bus the maximum available renewable power. To decrease the current in the microgrid, reducing losses due to parasitic resistances and the sections in cables and printed circuit boards, the microgrid has been designed around a high voltage DC bus (360 VDC).

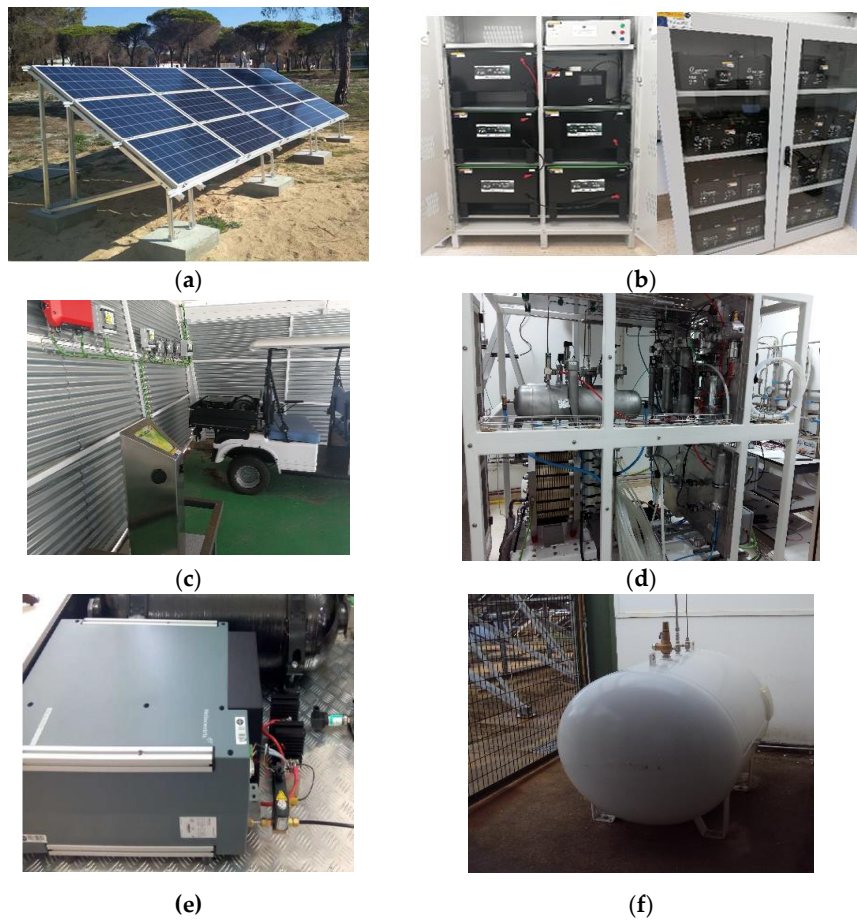
According to the demand, typical profiles for low-medium power residential applications (<10 kWe) were adopted. Additionally, the load profile associated with the recharging process of a medium-capacity electric vehicle was considered.

Regarding ESS, it is made up of two subsystems, a Li-ion battery bank (43.2 kWh) and a hydrogen system. The lead-acid battery bank (36 kWh) has the function to stabilize the DC bus voltage, therefore the lead-acid battery bank is directly connected to the DC and it will not serve as an energy storage system. This implies that lead-acid battery SOC must always be kept high, avoiding the need for a specific control system. This direct connection of the lead-acid battery bank makes it possible to take advantage of three key issues: (1) If the lead-acid battery bank was not connected to DC bus, the grid controller would be responsible for regulating the DC bus voltage. This involves a more complex control logic because the grid is responsible for the voltage control and the setting of the operating power of the grid according to the EMS setpoint. This requires a perfect synchronism between the rectifier (energy input to the bus) and the inverter (energy output from the bus) and the rest of the elements of the microgrid, and control dynamic fast enough to guarantee the stability of the bus voltage under fast changes in generation/consumption profile. (2) The use of the lead-acid battery bank as a backup system ensures that the DC bus voltage is maintained within a known operating range under any circumstances, while guaranteeing the power balance during the transients associated with the switching on and off of the rest of the equipment, mainly the hydrogen system. In this way, the equipment linked to grid operation, rectifier, and inverter only have the function of imposing the power setpoint established by the EMS, greatly reducing the associated control complexity. Finally, (3) the battery bank can act as a short/medium-term storage system, and therefore a further degree of freedom in energy management definition is available.

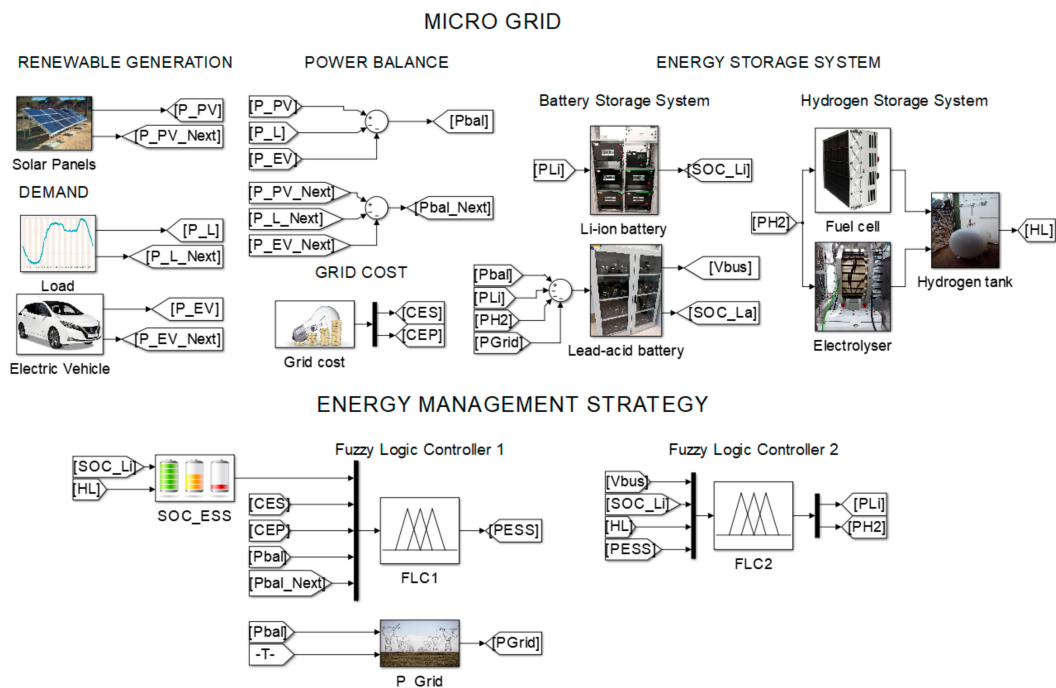
With respect to the ESS, the objective of the Li-ion battery bank is to act as a short-medium-term storage system, allowing a considerably lower SOC than the lead-acid battery bank, and taking advantage of its high cycle durability. As a long-term ESS, a hydrogen system is used. In this case, a circular system, which allows the generation of hydrogen by an alkaline electrolyzer (1 Nm<sup>3</sup>/h, 5 kWe), its subsequent storage in a pressurized tank (1.044 Nm<sup>3</sup>) at the hydrogen outlet pressure of the electrolyzer (30 bar), and the further generation of electrical energy through the use of a polymer electrolyte membrane (PEM) fuel cell (3 kW<sub>p</sub>).

A real image of each microgrid component is shown in Figure 2, and their main technical characteristics are collected in Table 2.

As is widely known, a fuzzy logic-based controller has the advantage to manage the microgrid without the need of having a model of the microgrid. Obviously, the microgrid model will be necessary to test and fine-tune the developed EMS (if applicable) by simulation before applying it to the actual microgrid. A model of this type of microgrid (hydrogen systems hybridization with renewable energy systems) has been already developed by the authors in previous works [23]. Therefore, the general model only needs to be adapted to the specific microgrid topology in each case. Figure 3 shows the MATLAB<sup>®</sup>-Simulink<sup>®</sup> microgrid configuration and the fuzzy logic-based EMS implemented in MATLAB<sup>®</sup>-Fuzzy Logic Toolbox<sup>™</sup> environment.



**Figure 2.** Detail of the microgrid components of Figure 1: (a) photovoltaic field; (b) Li-ion (left) and lead-acid battery (right); (c) Electric vehicle (white car on the background); (d) Alkaline electrolyzer; (e) polymer electrolyte membrane fuel cell; and (f) pressurized hydrogen tank.



**Figure 3.** MATLAB<sup>®</sup>-Simulink<sup>®</sup> Model of the microgrid of Figure 1 together with its energy management system.

**Table 2.** Technical characteristics of the subsystems that make up the microgrid.

Component	Manufacturer	Nominal Parameters
Solar PV mono-Si	BP® 60 (BP Solar®, Madrid, Spain)	5 kW <sub>p</sub>
Electric Vehicle	Nissan® Leaf (Nissan®, Yokohama, Japan)	30 kWh
Lead-acid battery bank	U-POWER® UP100-12 (POWER®, Sofia, Republic of Bulgaria)	30 × 12 V, 100 Ah (36 kWh)
Li-ion battery bank	CEGASA® ( CEGASA®, Basque Country, Spain)	75 × 3.2 V, 180 Ah (43.2 kWh)
Alkaline Electrolyzer	ARIEMA® (ARIEMA®, Madrid, Spain)	1 Nm <sup>3</sup> /h, 5 kWe
PEM fuel cell	Horizon® H-3000 (Horizon®, Singapore)	3 kW <sub>p</sub>
Hydrogen storage tank	Lapesa® LSP1000H (Lapesa®, Zaragoza, Spain)	1.044 Nm <sup>3</sup> , 30 bar

### 3. Energy Management System Design

This section develops the EMS, paying special attention to the FLC. It is assumed that sensors are available to take measurements of the necessary variables, as well as actuators for the control of the power electronics (see Figure 1) that govern the microgrid. None of these elements, parts of the EMS, are the subject of this paper. Next, the FLC design will be explained step by step.

#### 3.1. Power Balance on the DC Bus

Based on Figure 1, the Kirchhoff's Current Law always needs to be accomplished, so the power sum in the DC bus must always be zero. If all the loads are satisfied under any circumstance, this means that the main power grid sometimes will be delivering power to the DC bus (power deficit in the microgrid) and others will be extracting power from the microgrid, which will imply energy transfer from the microgrid to the main power grid. In the microgrid shown in Figure 1, the only power source (in a strict sense) is the PV field. The hydrogen storage system, as part of the ESS, can be a source if the fuel cell is running or a load if the electrolyzer is operating. Regarding the Li-ion battery bank as part of the ESS, it depends on whether the battery bank is recharging or supplying power from/to the DC bus. Then, before adopting a signs convention, the sum of the powers on the DC bus follows Equation (1):

$$P_{PV}(k) + P_{La}(k) + P_L(k) + P_{EV}(k) + P_{ESS}(k) + P_{Grid}(k) = 0, \quad (1)$$

where:

$P_{PV}(k)$ : renewable generation (PV panels) at sampling time  $k$  (W);

$P_{La}(k)$ : lead-acid battery bank power at sampling time  $k$  (W);

$P_L(k)$ : residential load demand at sampling time  $k$  (W);

$P_{EV}(k)$ : electric vehicle demand at sampling time  $k$  (W);

$P_{ESS}(k)$ : energy storage system power at sampling time  $k$  (W);

$P_{Grid}(k)$ : main power grid power at sampling time  $k$  (W).

Being, following Figure 1:

$$P_{ESS}(k) = P_{Li}(k) + P_{H_2}(k), \quad (2)$$

where:

$P_{Li}(k)$ : Li-ion battery bank power at sampling time  $k$  (W);

$P_{H_2}(k)$ : hydrogen system power at sampling time  $k$  (W),  $P_{H_2}(k) = P_{Els}(k)$  or  $P_{H_2}(k) = P_{FC}(k)$ , where  $P_{Els}(k)$  is the electrolyzer power at sampling time  $k$  (W) and  $P_{FC}(k)$  is the fuel cell power at sampling time  $k$  (W).

Again, following Figure 1:

$$P_{Grid}(k) = P_{GI}(k) \text{ or } P_{Grid}(k) = P_{GO}(k), \quad (3)$$

where:

$P_{GI}(k)$ : input power; power supplied from the main power grid at sampling time  $k$  (W);

$P_{GO}(k)$ : output power; power supplied to the main power grid at sampling time  $k$  (W).

The adopted signs criteria are determined by the direction of the energy flow in the DC bus, considering the energy injected to the DC bus as positive, and the energy extracted from the bus as negative. Depending on the microgrid operation state, the signs of the different powers must assure Equation (1), taking into account Equations (2) and (3) regarding whether the subsystems are injecting to the DC bus or extracting power to/from it. Of course, in a dynamic system as the microgrid of Figure 1, the only way to satisfy Equation (1) is by means of the EMS.

### 3.2. Fuzzy Logic Controller Structure

The fuzzy logic-based EMS proposed in this paper is shown in Figure 4. Note that to elaborate the fuzzy rule base, the FLC input variables have been grouped into two sets, named FLC1 and FLC2. The first makes decisions about the exchange with the main power grid, and the second over the ESS use. This will be explained below.

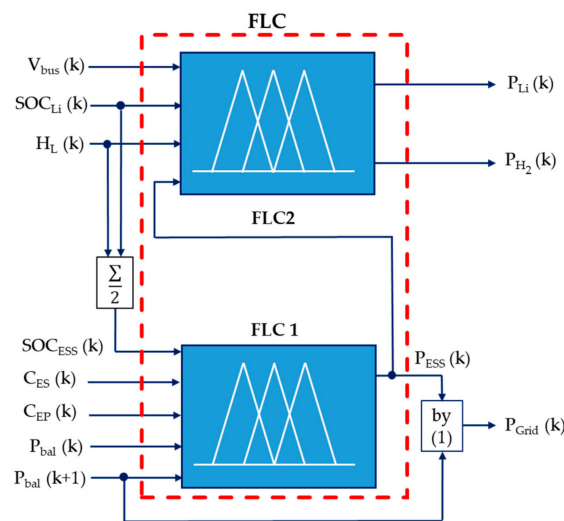


Figure 4. Fuzzy logic-based EMS control structure.

As already said, the only source (in the strict sense) in the microgrid is the PV field, so the power balance must be guaranteed by the ESS and/or the main power grid. Consequently, following the adopted sign criteria, the power balance will be defined by Equation (4), see Figure 1:

$$P_{bal}(k) = P_{PV}(k) - P_L(k) - P_{EV}(k). \tag{4}$$

$P_{bal}(k)$  will be positive when there is energy surplus in the microgrid and negative in case of deficit. In the first case, the surplus energy must be managed by the EMS producing hydrogen and/or recharging batteries and/or selling energy to the main power grid. In the second case, the microgrid power will be balanced taking the power of the batteries, and/or fuel cell and/or the main power grid. So,  $P_{bal}(k)$  needs to be an input variable of the FLC. However, the EMS cannot act and verify the results of its action in the same sampling to make the appropriate decisions, so it must have information in advance. Then, for the best EMS functioning, the FLC needs to know the  $P_{bal}$  forecasting, so  $P_{bal}(k + 1)$  needs to be the other FLC input variable. Although it is not the subject of this document, there is a large bibliography on renewable generation forecasts and consumption profiles.

As was explained in Section 2, and based on Figure 1, the role of the lead-acid battery bank is to regulate the DC bus voltage. Therefore, it does not have tasks related to power management, except the instantaneous ones in the DC bus. So, the lead-acid battery SOC must be always high in order to assure the proper voltage in the DC bus,  $V_{bus}(k)$ . According to this, the EMS must have information in each sampling about the  $V_{bus}$ , so this voltage must be an input variable of the FLC.

Unlike the previous case, the operating voltage of the Li-ion battery bank is not a fundamental parameter in the operation of the microgrid (see Figure 1 to note that the Li-ion battery bank is not

directly connected to the DC bus). Its role in the microgrid is its ability to store energy to be used by the microgrid when needed. The EMS needs to know its SOC ( $SOC_{Li}(k)$ )—consequently, this value must be an input variable of the FLC. Furthermore, since the Li-ion battery bank must effectively contribute to the achievement of Equation (1) delivering/absorbing energy to/from the DC bus, the EMS must decide on its power,  $P_{Li}(k)$  and its sign, so this is an FLC output variable.

The last element of the ESS is the hydrogen system. Its availability to deliver power to the DC bus through the fuel cell is given by the level of hydrogen in the storing tank,  $HL(k)$ ; therefore, this need to be another input variable. On the other hand, depending on the energy state in the microgrid, surplus or deficit, the EMS must decide, respectively, to have the electrolyzer operating producing hydrogen or the fuel cell delivering energy to the DC bus. So,  $P_{H_2}(k)$  and its sign (negative for electrolyzer operating or positive in the case of the fuel cell) will be another FLC output variable.

Additionally, since Li-ion battery bank and hydrogen storage subsystem made up the ESS, and they need to work as a whole, it is interesting that the EMS knows the joint possibilities to deliver power to the DC bus. Thus, a new FLC input variable has been created as the average value of  $SOC_{Li}(k)$  and  $HL(k)$ ; its name is  $SOC_{ESS}(k)$ .

So far, the relationships between the internal elements of the microgrid have been described. The way EMS interacts with the main power grid will be explained below. As Figure 4 shows, the FLC decides the utilization of the main power grid based on the actual  $SOC_{ESS}(k)$ ,  $P_{bal}(k)$ , and the forecasting power of the ESS,  $P_{ESS}(k + 1)$ , and of the power balance,  $P_{bal}(k + 1)$ , together with the purchase price,  $C_{EP}(k)$ , and the sale price,  $C_{ES}(k)$ , of the electricity. Then, for example, in case there is power deficit and the electricity cost from the main power grid is low and  $SOC_{ESS}$  is also low, it will be interesting to use the main power grid to balance the microgrid power and to recharge the ESS. However, if the electricity cost is high, it will be interesting to use the main power grid only for power balancing.

The FLC system schematized in Figure 4 shows that it is a complex multivariable control system with nine inputs and three outputs. Taking into account its structure, the fuzzy inference is defined by two fuzzy rule bases (one for FLC1 and other for FLC2); however, to facilitate the inference logic, FLC1 has been built using two fuzzy rule bases, one for energy surplus situations and another for deficit situations.

Integrated into the EMS, the FLC functions as follows (see Figure 4): In the sampling time  $k$ , it receives the real (physical) variables ( $V_{bus}(k)$ ,  $SOC_{Li}(k)$ ,  $HL(k)$ ,  $P_{ESS}(k)$ ,  $SOC_{ESS}(k)$ ,  $C_{ES}(k)$ ,  $C_{EP}(k)$ ,  $P_{bal}(k)$  and the predicted  $P_{bal}(k + 1)$ ). Then, it fuzzifies these variables to convert them in linguistic ones ( $V_{bus-fuzz}(k)$ ,  $SOC_{Li-fuzz}(k)$ ,  $HL-fuzz(k)$ ,  $SOC_{ESS-fuzz}(k)$ ,  $C_{ES-fuzz}(k)$ ,  $C_{EP-fuzz}(k)$ ,  $P_{bal-fuzz}(k)$ ,  $P_{bal-fuzz}(k + 1)$ ). From here, FLC can use the linguistic variables to make the fuzzy inference, that is, to evaluate the fuzzy rules of each fuzzy rule base, which delivers the output linguistic variables  $P_{Li-fuzz}(k)$ ,  $P_{H_2-fuzz}(k)$ , and  $P_{ESS-fuzz}(k)$ . After that, the FLC makes a defuzzification process to obtain the real output variables of the FLC:  $P_{Li}(k)$ ,  $P_{H_2}(k)$ , and  $P_{ESS}(k)$  (Figure 5). Now, these can be used by the EMS in order to act over the microgrid and control it.

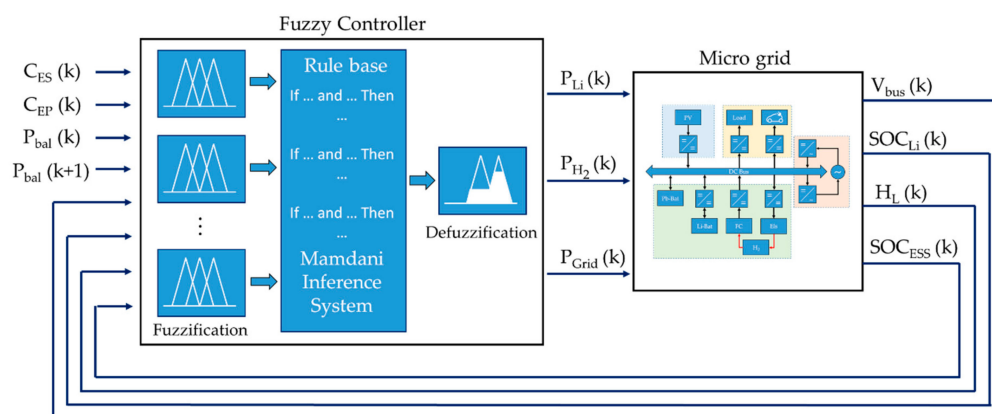
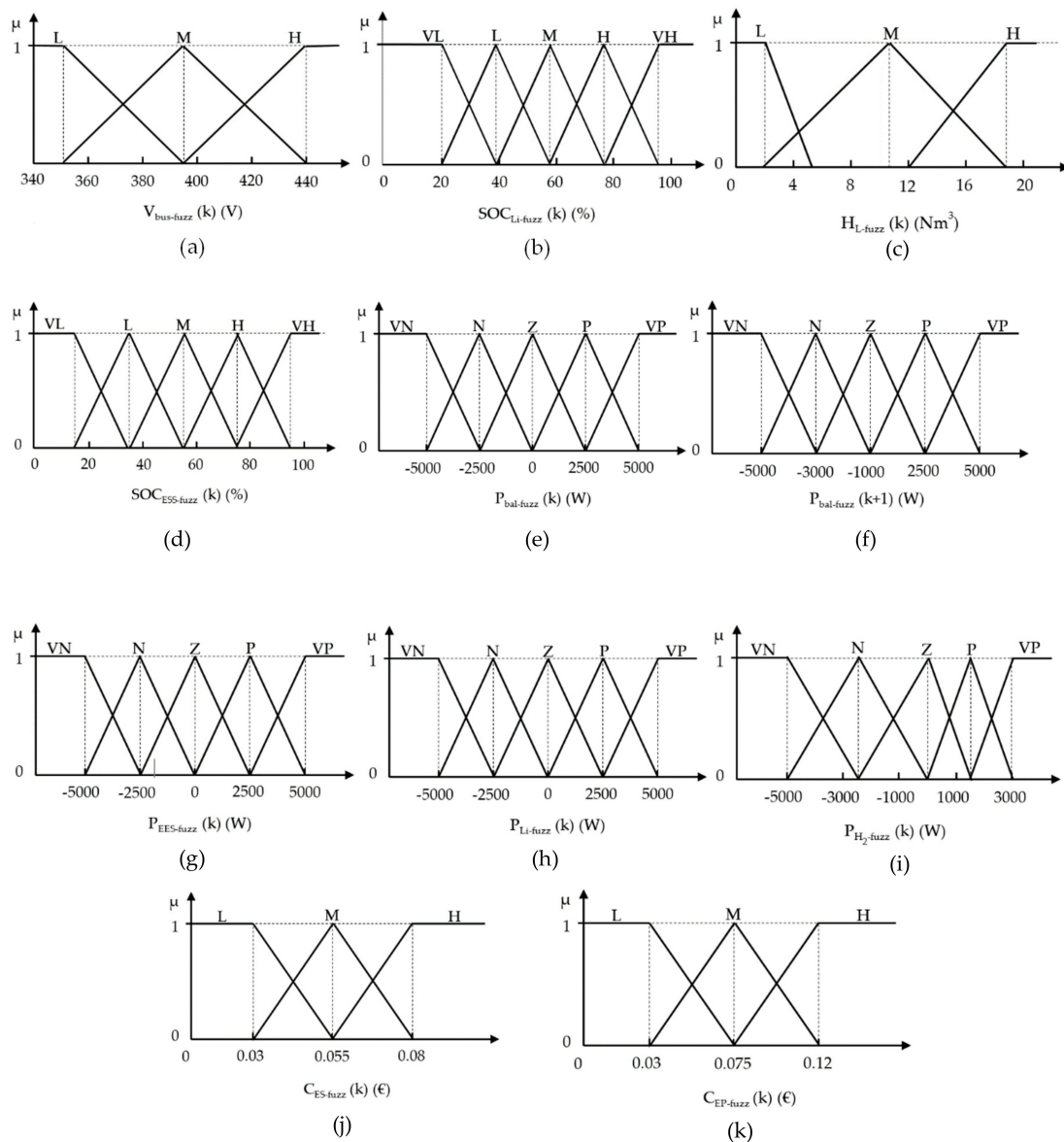


Figure 5. EMS control structure.

### 3.3. Fuzzy Sets

Based on the knowledge of the microgrid and in its operation way already explained in the previous section, the fuzzy sets of Figure 6 have been defined. Due to its simplicity and the fact that the microgrid does not need overly smooth control, fuzzy sets have been defined using triangular membership functions. The universe of discourse of each variable has been decided according to technical characteristics and the microgrid operation, Equation (5).

$$\begin{aligned}
 &350 \text{ V} \leq V_{bus}(k) \leq 440 \text{ V}; 20\% \leq SOC_{Li}(k) \leq 100\%; 2 \text{ Nm}^3 \leq HL(k) \leq 20 \text{ Nm}^3; \\
 &15\% \leq SOC_{ESS}(k) \leq 100\%; -5000 \text{ W} \leq P_{bal}(k) \leq 5000 \text{ W}; -5000 \text{ W} \leq P_{bal}(k+1) \leq 5000 \text{ W}; \\
 &-5000 \text{ W} \leq P_{Li} \leq 5000 \text{ W}; -5000 \text{ W} \leq P_{H_2} \leq 3000 \text{ W}; -5000 \text{ W} \leq P_{ESS} \leq 5000 \text{ W}; \\
 &0 \leq C_{ES} \leq 0.08 \text{ €}; 0 \leq C_{EP} \leq 0.12 \text{ €}
 \end{aligned} \tag{5}$$



**Figure 6.** Membership functions of the fuzzy sets for: (a) bus voltage,  $V_{bus-fuzz}(k)$ ; (b) Lithium battery state of charge,  $SOC_{Li-fuzz}(k)$ ; (c) hydrogen level,  $HL-fuzz(k)$ ; (d) ESS state of charge,  $SOC_{ESS-fuzz}(k)$ ; (e) Power balance,  $P_{bal-fuzz}(k)$ ; (f) Power balance prediction,  $P_{bal-fuzz}(k+1)$ ; (g) ESS power setpoint,  $P_{ESS-fuzz}(k)$ ; (h) Lithium battery power setpoint,  $P_{Li-fuzz}(k)$ ; (i) Hydrogen-based system power setpoint,  $P_{H_2-fuzz}(k)$ ; (j) Grid selling cost,  $C_{ES-fuzz}(k)$ ; (k) Grid purchase cost,  $C_{EP-fuzz}(k)$ .

Then, for example, limits of the DC bus voltage ( $V_{bus}(k)$ ) have been determined using two fundamental criteria, the connected devices permissible operating range (350–450 VDC), as well as the safe operating voltage for the lead-acid battery bank (330–440 VDC), responsible for maintaining the voltage in range on the DC bus. The upper and lower limits are determined by the most limiting condition. In this case, the lower limit is the connected devices' permissible operating range (350 V). On the other hand, the upper limit will be the maximum recommended battery charging voltage, which is 440 V (2.4 V/cell). See Figure 6a.

The operation limit of the Li-ion battery bank ( $SOC_{Li}(k)$ ) must correspond with its role as short-medium-term ESS. Taking advantage of its cycle durability, its minimum permissible SOC is 20%. This type of battery can operate in this range without suffering damage. See Figure 6b.

On the other hand, the lead-acid battery bank has the pivotal mission of guaranteeing the voltage stability in the DC bus, as well as to act in the very short term, guaranteeing the power balance during the transient switching of the rest of the elements connected to the DC bus. In addition to that, and as it is well known, the allowed SOC in this type of batteries is considerably more restrictive than in the case of Li-ion (never less than 60%). In any case, this is guaranteed by the range allowed for  $V_{bus}(k)$ .

On the other hand and regarding the second actor of the ESS, the universe of discourse of the hydrogen level ( $HL(k)$ ) is determined by the maximum capacity of the storage tank (20 Nm<sup>3</sup>), and the recommended value to ensure a minimum operating pressure (2 Nm<sup>3</sup>). See Figure 6c. Then,  $SOC_{Li}(k)$  and  $HL(k)$  ranges define the  $SOC_{ESS}(k)$  range, whose minimum value is the average between 10% and 20%, i.e., 15%. See Figure 6d.

Regarding  $P_{bal}(k)$ , when all the  $P_{PV}(k)$  is available and there is no consumption in the microgrid Equation (4), its value is that corresponding to the PV field, i.e., 5000 W. On the contrary, if there is not  $P_{PV}(k)$  available and the consumption is the maximum, its value is −5000 W. See Figure 6e for  $P_{bal}(k)$  and Figure 6f, obviously the same for  $P_{bal}(k + 1)$ . Similarly, when the ESS is being charged from the microgrid or it is supplying to the microgrid, its power range ( $P_{ESS}(k)$ ) can vary from −5000 W to 5000 W, respectively (Figure 6g). The first case represents the maximum load power of the ESS from the microgrid; the second indicates that all the microgrid loads are supplied by the ESS. In the ESS, the power will be shared between the Li-ion battery bank and the hydrogen system, so this leads to the given range of the universes of discourse in Equation (5) for  $P_{Li}$ ,  $P_{H_2}$ , and  $P_{ESS}$ . Remember that the fuel cell maximum power is 3000 W. See Figure 6h,i.

Finally, the universes of discourse of  $C_{ES}(k)$  and  $C_{EP}(k)$  shown in Figure 6j,k have been defined, taking into account the Spanish market at the time of writing the paper.

### 3.4. Fuzzy Rules Base

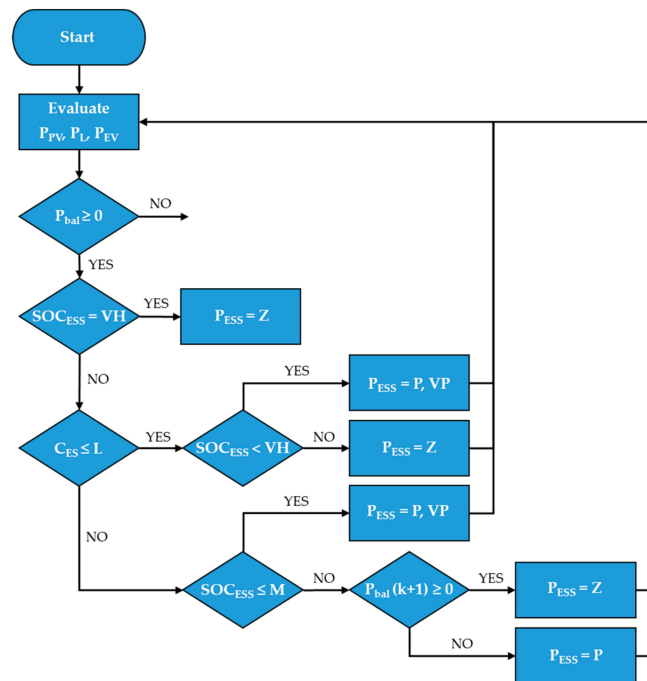
On the basis of the above considerations respect to the microgrid functioning and considering the memberships functions described in Figure 6, three fuzzy rule bases have been defined (two for FLC1, depending on if the situation is purchasing or selling electricity to the main power grid, and one for FLC2). Each fuzzy rule base, as usual, is composed of rules of the form IF-THEN, as follows:

$$\text{IF } V_{bus-fuzz}(k) \text{ is } L \text{ and } P_{ESS-fuzz}(k) \text{ is } VP \text{ and } SOC_{Li-fuzz}(k) \text{ is } VL \text{ THEN } \begin{cases} P_{Li-fuzz}(k) \text{ is } P \\ P_{H_2-fuzz}(k) \text{ is } Z \end{cases}$$

FLC2 includes 59 rules and FCL1 contains 98 rules (36 rules in case of energy surplus and 62 in case of energy deficit). Regarding the high number of rules, the usual format (detail rule by rule from each fuzzy rule base) may not be the easiest and most illustrative way to do this. Therefore, to illustrate in a glance the inference of the three fuzzy rule bases, Figures 7–9 illustrate the respective flow charts.

In the case of energy excess, Figure 7 ( $P_{bal}(k) > 0$ ), the use of the microgrid's own resources is prioritized over the use of the main power grid, as long as the energy stored is close to its maximum level ( $SOC_{ESS-fuzz}(k) = VH$ ). In the event that the ESS is not capable of absorbing more energy ( $SOC_{ESS-fuzz}(k) = VH$ ), exclusive use of the main power grid is made to accomplish Equation (1).

In the event that the energy stored reaches a medium or high value, it is possible to sell the energy excess to the main power grid with the aim that while the energy reserves in the ESS are guaranteed, the EMS looks for economic profits. Energy sales to the main power grid will be determined by the energy excess, sale price, stored energy, and the power balance forecast in the next sampling period. Finally, if the ESS is not capable of absorbing more energy, exclusive use of the main power grid is made to accomplish Equation (1).



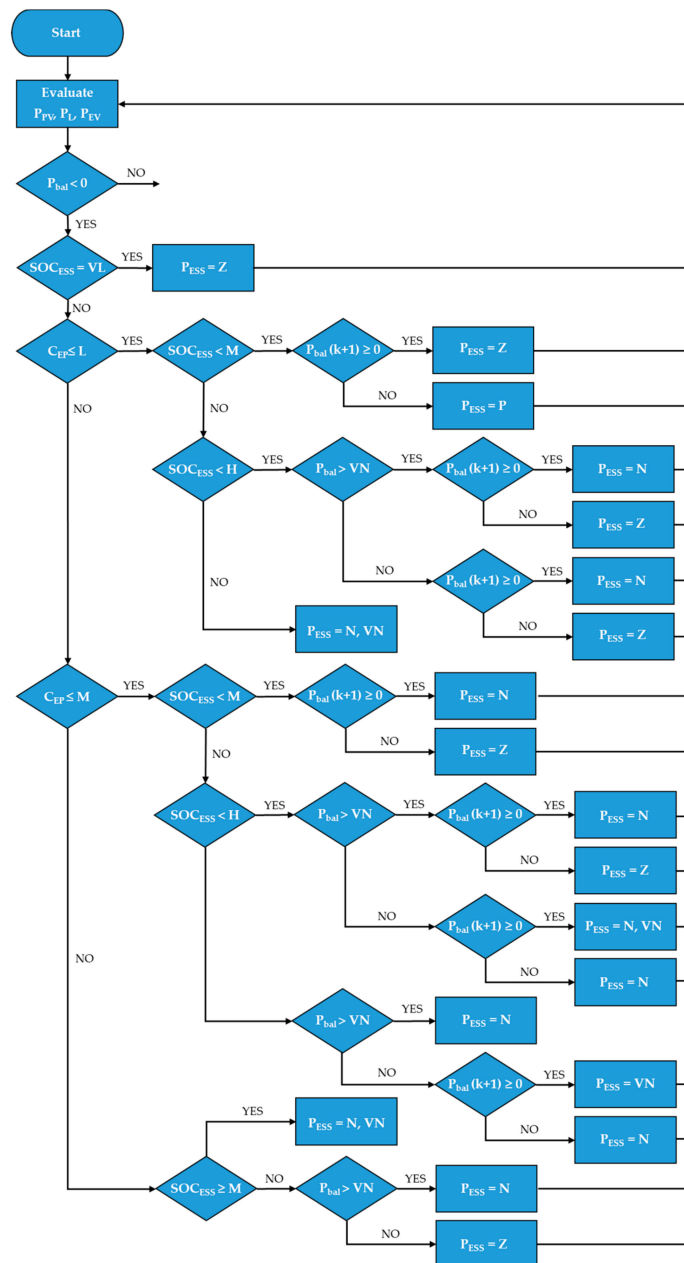
**Figure 7.** FLC1 flowchart diagram in the sampling  $k$  when there is an energy surplus situation (VL: Very Low, L: Low, M: Medium, Z: Zero; P: Positive, VP: Very Positive, VH: Very High; according to membership functions defined in Figure 5). It is understood that the sets used are fuzzy.

By contrast, during energy deficit situations, Figure 8 ( $P_{bal}(k) < 0$ ), the use of the microgrid’s resources is prioritized over the use of the main power grid, as long as the energy stored is not close to its minimum level ( $SOC_{ESS-fuzz}(k) = VL$ ). If this is the case, to guarantee the power balance the EMS makes use of the main power grid.

On the other hand, if the stored energy in ESS is at an intermediate level, joint use of the ESS and main power grid can be made to satisfy demand if the cost of purchasing energy is low, allowing a more conservative use of the microgrid’s resources. As in the previous case, energy purchases from the main power grid will be determined by the energy deficit, purchase price from the main power grid, stored energy, and prediction of generation and consumption in the next sampling period.

With respect to the FLC2, the designed flow chart to build its fuzzy rule base is shown in Figure 9. Its function is to calculate the power setpoint of each device that integrates the ESS: the Li-ion battery bank and hydrogen system. The control premise is determined by the role of each system, the level of stored energy, and operating restrictions.

With respect to the Li-ion battery bank, its high performance and the high number of operating cycles mean the battery bank does not require special control actions for its operation. Its storage capacity will be maximized by making use of its high depth of discharge (DOD), resulting in a more conservative use of the hydrogen system.

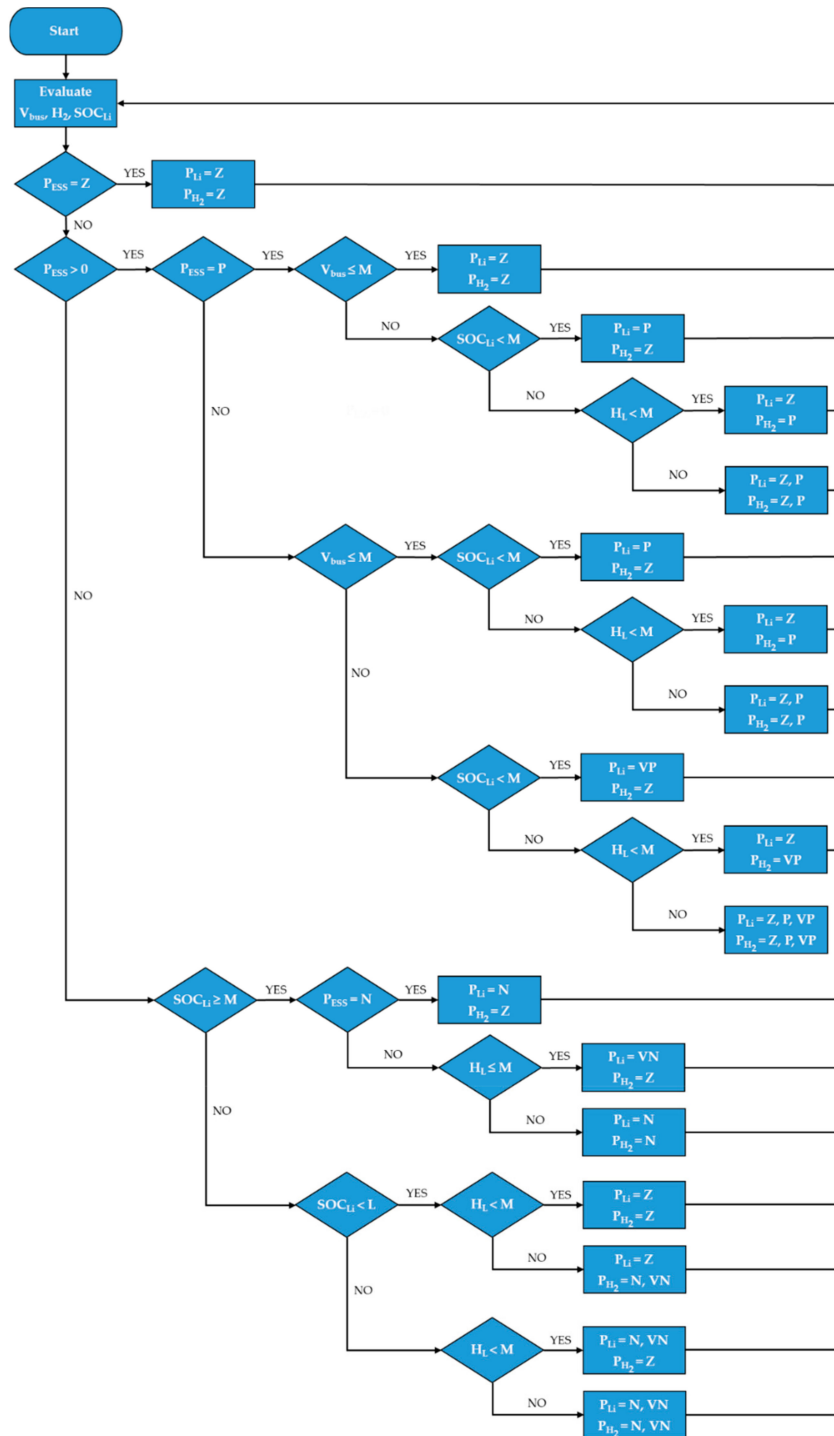


**Figure 8.** FLC1 flowchart diagram in the sampling  $k$  when there is an energy deficit situation (VL: Very Low, VN: Very Negative, L: Low, N: Negative; Z: Zero; M: Medium, H: High; P: Positive, VP: Very Positive, VH: Very High; according to membership functions defined in Figure 5). It is understood that the sets used are fuzzy.

Considering the direct connection of the lead-acid battery bank to DC high voltage bus (Figure 1), it is necessary to implement a maximum voltage charging protocol, which guarantees the safe and efficient use of the battery bank. It is also necessary to limit the minimum discharging voltage, ensuring the DC bus voltage. Based on the described functionality and with the objective of prolonging the lead-acid battery bank lifespan, a strict  $V_{bus}$  control has been defined.

Considering the hydrogen system, due to its role as a long-term storage system, its reduced lifespan, and high cost, it is necessary to guarantee a conservative use. To get it, the developed FLC2 will work on two lines of action. The first one is to prioritize the use of the Li-ion battery bank, and the second is to reduce the operating stress of electrolyzer and fuel cell. For this purpose, it is necessary to

carry out the correct definition of the membership functions of the FLC2 in order to guarantee smooth changes in the power set-points.



**Figure 9.** FLC2 flowchart diagram in the sampling  $k$  (VL: Very Low, VN: Very Negative, L: Low, N: Negative; Z: Zero; M: Medium, H: High; P: Positive, VP: Very Positive, VH: Very High; according to membership functions defined in Figure 5). It is understood that the sets used are fuzzy.

Based on the above criteria, in case of energy excess, the ESS can take energy from the DC bus to be charged ( $P_{ESS} < 0$ ). Then, the lead-acid battery bank will be ready to be recharge until a medium DC bus voltage is reached ( $V_{bus-fuzz}(k) \leq M; V_{bus}(k) \leq 390$  V). Once this voltage is reached, the Li-ion battery bank and hydrogen subsystem will be used to absorb the energy surplus, implementing a

maximum charging voltage protocol. The priority in the recharge energy coming from the DC bus will be determined by the role of each element in the ESS, prioritizing the use of the Li-ion battery over the hydrogen system if its SOC is low ( $SOC_{Li-fuzz}(k) \leq M$ ).

On the other hand, in case the ESS should supply energy to the microgrid ( $P_{ESS} > 0$ ), energy deficit situation, the use of the Li-ion battery bank will be prioritized in the first instance ( $P_{Li-fuzz}(k) = P$  and  $P_{H_2-fuzz}(k) = Z$ ) if its SOC is above 60% ( $SOC_{Li-fuzz}(k) \geq M$ ). In this case, the hydrogen level shall be assessed ( $HL_{-fuzz}(k) \leq M$ ), a prominent use of this resource shall be made while maintaining a medium-high level as long as possible.

Finally, in all the situations where both storage systems have energy available, ( $Low < SOC_{Li-fuzz}(k) < Medium$ ) and ( $Low < HL_{-fuzz}(k) < Medium$ ), energy distribution between Li-ion batteries and the hydrogen system will be chosen, depending on the power balance and their stored energy capability.

### 3.5. Defuzzification

After the inference process, the fuzzy sets  $P_{Li-fuzz}(k)$ ,  $P_{H_2-fuzz}(k)$  and  $P_{ESS-fuzz}(k)$  need to be converted to real variables (crisp values). For that, a defuzzification process needs to be implemented to lead to  $P_{Li}(k)$ ,  $P_{H_2}(k)$ , and  $P_{ESS}(k)$ . In this case, the centroid method has been used.

## 4. Results

In order to validate the proposed fuzzy-based EMS, two simulation tests in MATLAB<sup>®</sup> environment of the microgrid defined in Section 2 were developed, in accordance with the configuration shown in Figure 1. To carry out the test, the MATLAB<sup>®</sup>-Simulink<sup>®</sup> microgrid model of Figure 3 was used.

In the simulation test, a residential-type daily profile of renewable generation, grid utilization cost, and typical residential consumption was created. The generation profile corresponded to a 5 kW<sub>p</sub> photovoltaic field, for typical radiation and ambient temperature in Huelva (southwest of Spain).

The cost of purchasing energy from the main power grid corresponded to a typical night rate profile in Spain, Figure 10. On the other hand, the sale of energy to the grid (considering the Spanish situation) was carried out by a decrease in the bi-monthly electricity invoice, with a fixed rate value agreed with the electricity company of −0.06 €/kWh.

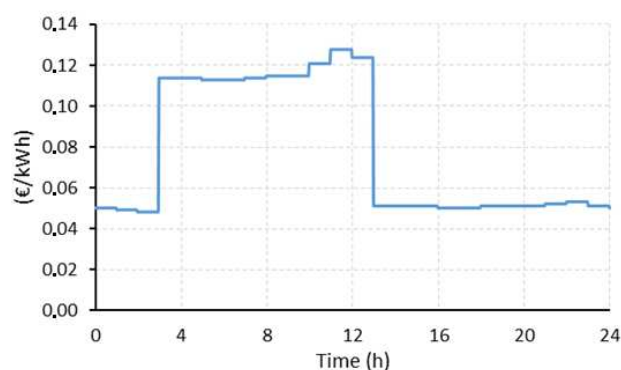


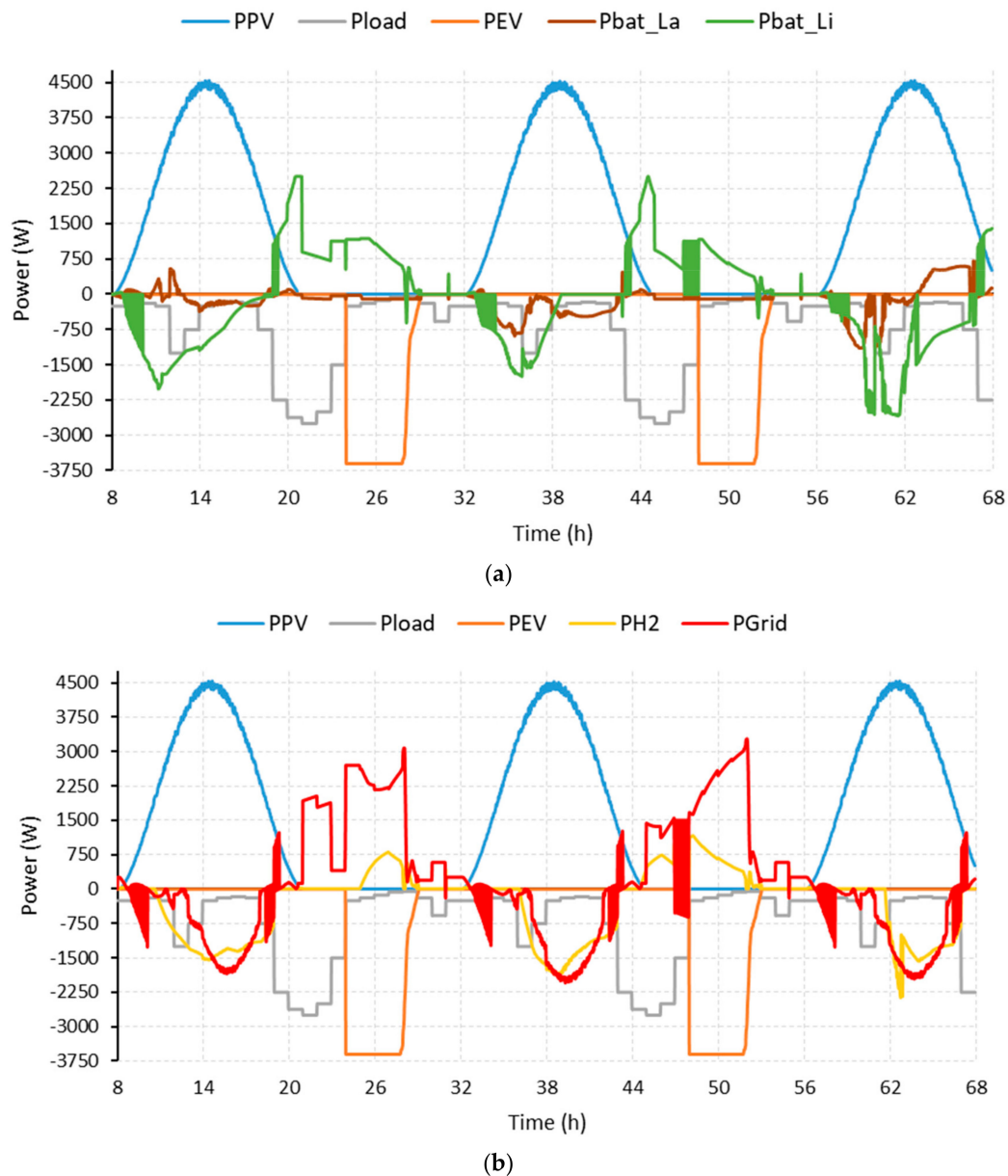
Figure 10. Energy cost profile.

In the test, a sampling time of 1 min was used. The microgrid was tested in its whole configuration, i.e., as showed in Figure 1. In order to check the correct operation of the proposed controller, solar generation profile was considered without and with fluctuations (Figures 11 and 12, respectively).

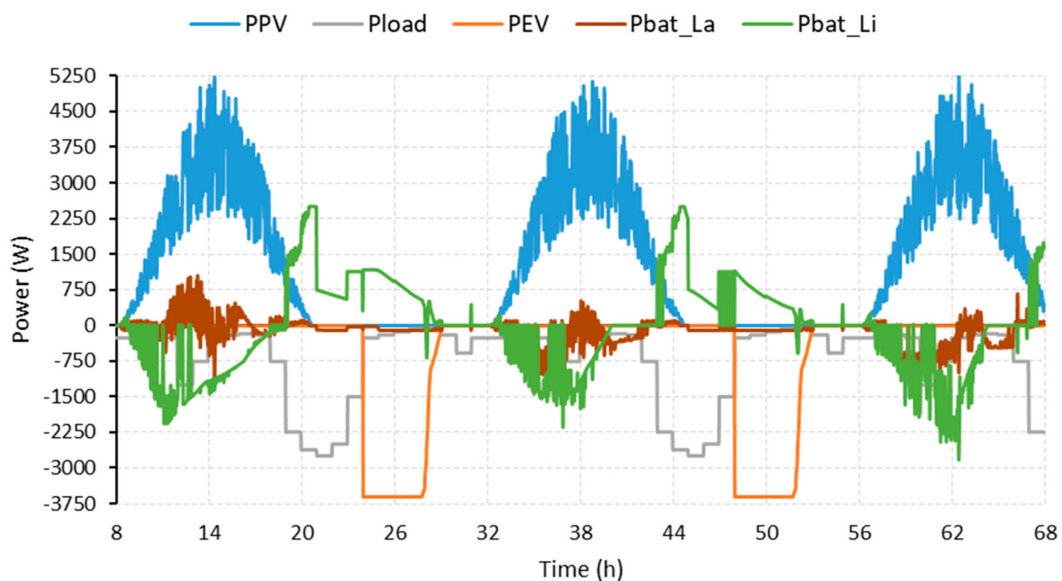
The usual residential profile, where residents are outside during most of the daylight hours, is characterized by consumption valleys during the day (when it takes place the maximum production of photovoltaic) and consumption peaks just after the noon (if residents go home for lunch) and especially at night (involving the ESS use); hence the interest of the night rate (see Pload in Figures 11 and 12). As a residential type microgrid, the electric vehicle contributes to the demand profile (see PEV

in Figures 11 and 12). It reflects a daily use of the vehicle corresponding to 40% of its energy capacity, and the recharge energy consumption will be carried out coinciding with the night rate.

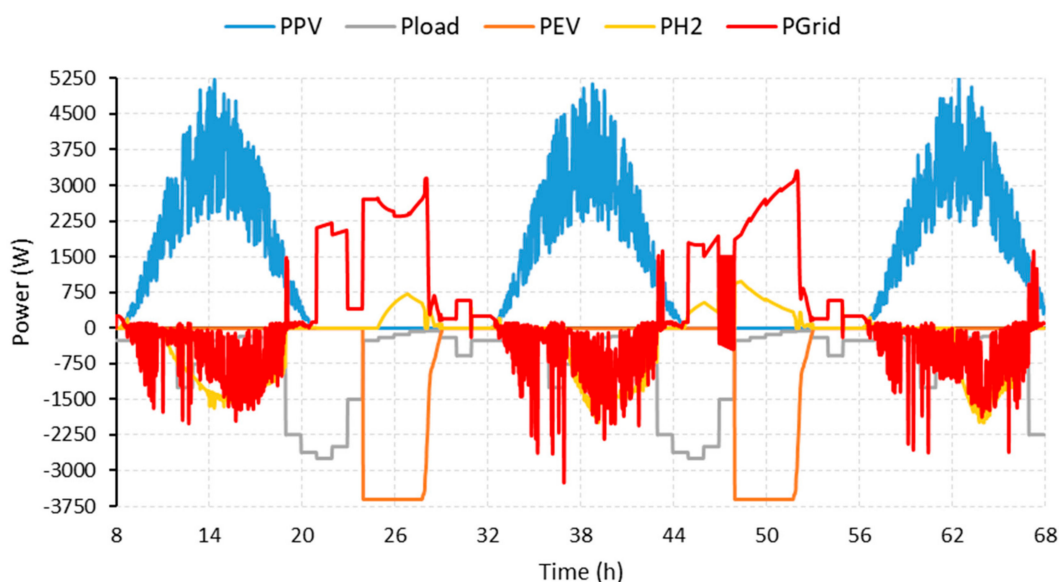
Finally, to evaluate the economic performance of the proposed strategy against traditional control techniques, the reference study case presented in [24] was chosen. This reference proposes a hysteresis SOC-based EMS. This EMS determines the power setpoint of the energy storage system and grid, taking into account only the battery SOC and hydrogen level. The main grid will be used to guarantee the power balance in extreme conditions. The parameters that defined the EMS strategy are shown in Table 3.



**Figure 11.** Microgrid power variables: (a) renewable (photovoltaic) power (PPV), residential consumption (Pload), electric vehicle consumption (PEV), lead-acid battery power (Pbat\_La), and Li-ion battery power (Pbat\_Li) for stable solar profile; (b) renewable (photovoltaic) power (PPV), residential consumption (Pload), electric vehicle consumption (PEV), hydrogen system power (PH2), and main power grid (PGrid) for stable solar profile.



(a)



(b)

**Figure 12.** Microgrid power variables: (a) renewable (photovoltaic) power (PPV), residential consumption (Pload), electric vehicle consumption (PEV), lead-acid battery power (Pbat\_La), and Li-ion battery power (Pbat\_Li) for fluctuating solar profile; (b) renewable (photovoltaic) power (PPV), residential consumption (Pload), electric vehicle consumption (PEV), hydrogen system power (PH2), and main power grid (PGrid) for fluctuating solar profile.

**Table 3.** Parameters used in the reference study case (hysteresis-based EMS parameters).

EMS Parameter	Value
Minimum SOC threshold	50%
Maximum SOC threshold	90%
Hysteresis bandwidth	10%
Maximum Hydrogen level	20 Nm <sup>3</sup>
Minimum Hydrogen level	2 Nm <sup>3</sup>

The results from the test carried out are shown in Figures 11 and 12. Similarly, the DC bus voltage profile and the energy stored ( $SOC_{La}$ ,  $SOC_{Li}$ , and  $HL$ ) are shown in Figures 13 and 14 respectively. Figure 15 allows the comparison of the hourly grid cost obtained from the proposed fuzzy-based EMS with respect to the traditional case connected exclusively to the main power grid and the reference study case based on hysteresis EMS ( $\text{€} > 0$  means residential facility purchases energy to the main power grid,  $\text{€} < 0$  means that the microgrid of the residential facility sells energy to the main power grid).

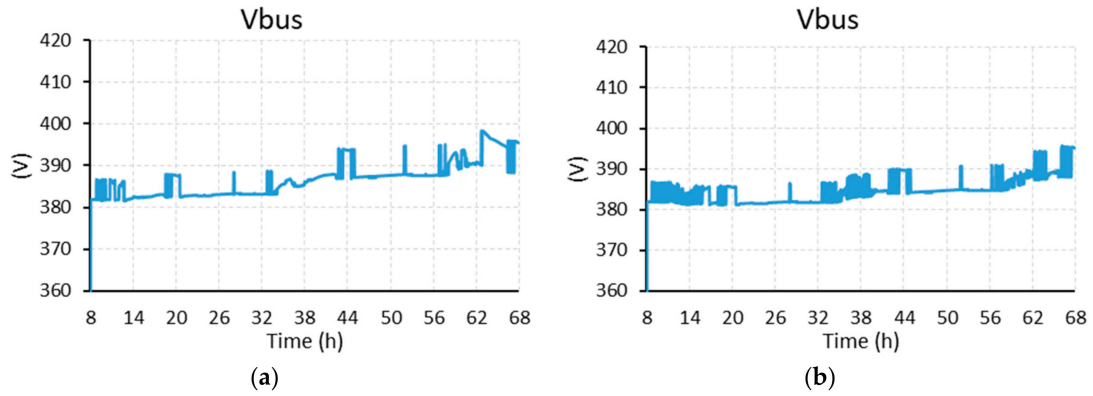


Figure 13. DC bus voltage for (a) stable solar profile and (b) fluctuating solar profile.

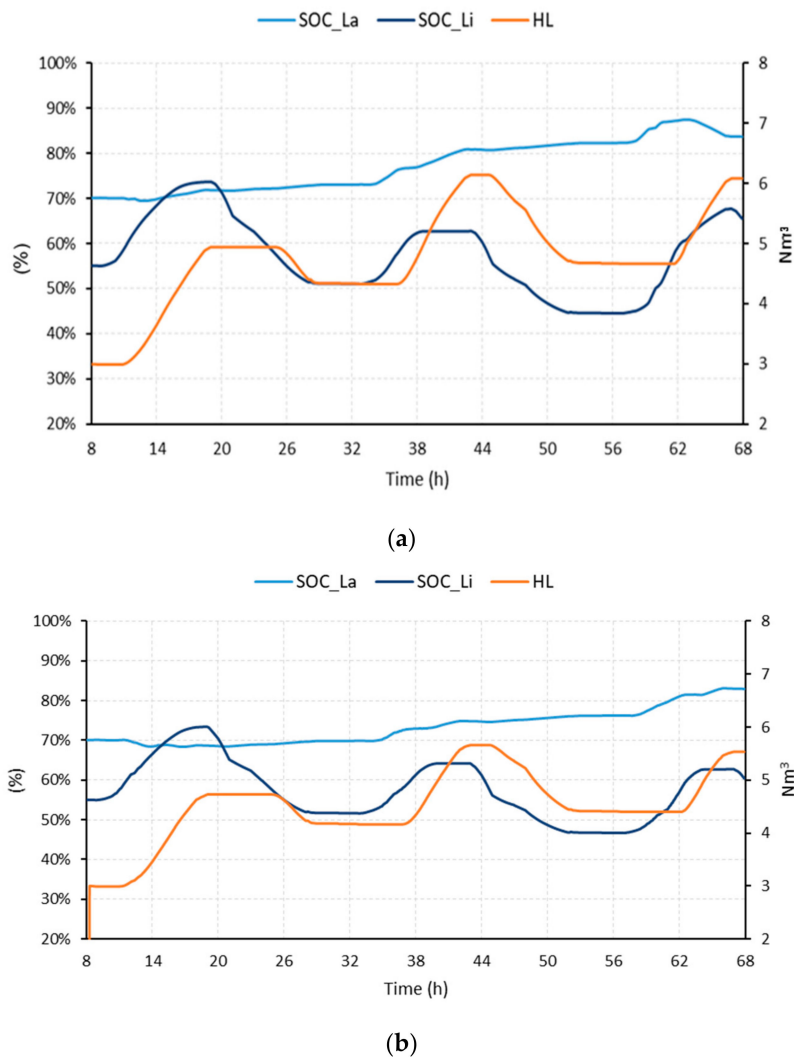
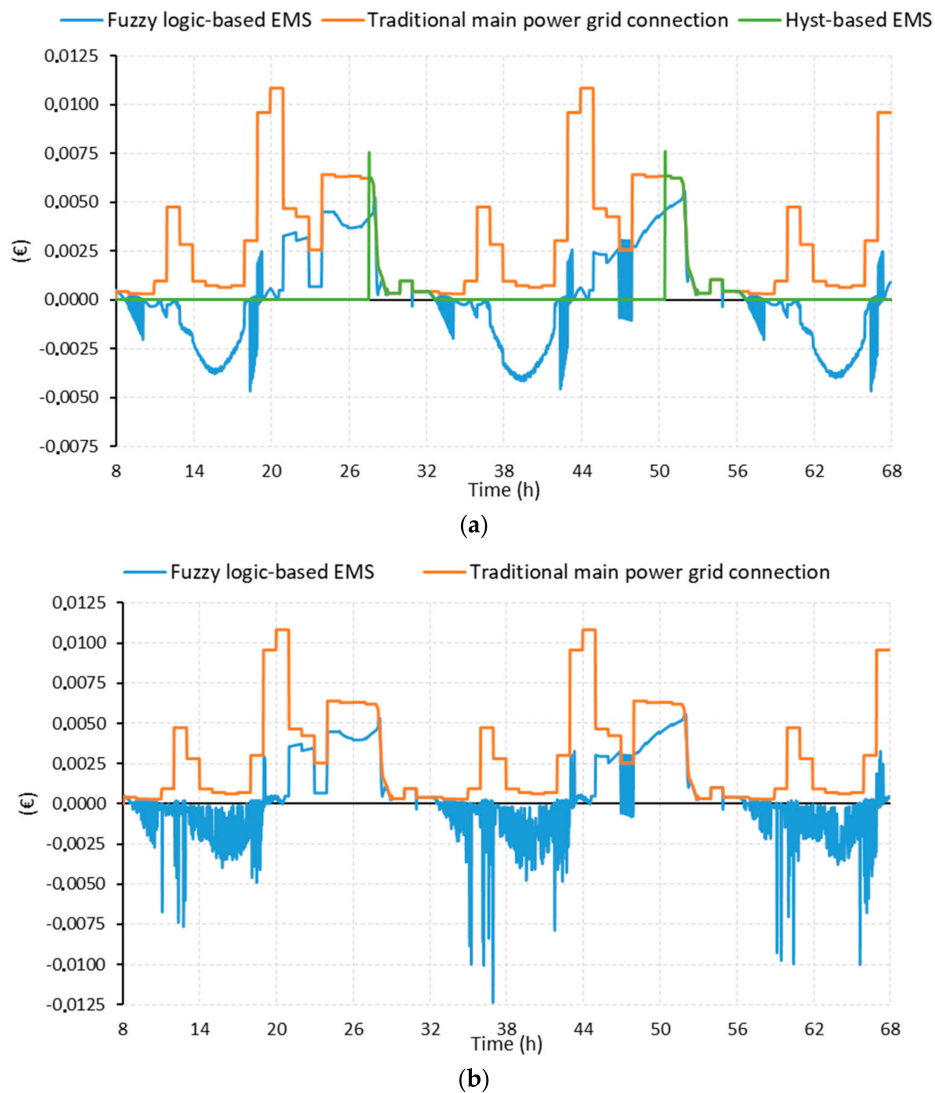


Figure 14. Lead-acid battery SOC ( $SOC_{La}$ ), Li-ion battery SOC ( $SOC_{Li}$ ), and hydrogen level ( $HL$ ) for (a) stable solar profile and (b) fluctuating solar profile.



**Figure 15.** Grid cost for proposed fuzzy logic-based EMS versus traditional main power grid connection and hysteresis-based EMS for (a) stable solar profile and (b) fluctuating solar profile.

## 5. Discussion

According to the generation and consumption profile, Figures 11 and 12, the microgrid started daylight hours in an energy surplus situation that remained virtually during the period  $8 \text{ h} \leq t \leq 19 \text{ h}$ . This was used by the EMS to recharge the Li-ion battery bank (Figures 11a and 12a). As there was still energy surplus, the EMS ordered to start the hydrogen production (Figures 11b, 12b and 14). Despite the electrolyzer operation, there was still energy excess, which was sold to the main power grid (Figures 11b and 12b).

According to the EMS performance, the decision criteria of the fuzzy logic-based controller are not only meet with the load demand but also guarantee the best performance according to technical and economic parameters. Then, with the aim to enlarge the electrolyzer lifespan, it was tried that the electrolyzer had an operation regime that was as stable as possible, to the detriment of more variable use of the Lithium battery bank and grid.

Along the first considered period ( $8 \text{ h} \leq t \leq 19 \text{ h}$ ) it was easy to demonstrate that the behavior of the lead-acid battery bank was as expected. Indeed, its contribution to the DC bus power was very little and only dedicated to balancing the bus (Figures 11a and 12a). On the other hand, the DC bus voltage was really under control, with fluctuations below 10 Volts, i.e., less than 4% (see Figure 13). Additionally, the bus voltage kept on increasing until the end of the simulation time. The reason is

that the control strategy made it possible to derive part of the surplus energy directly to the lead-acid battery bank if the voltage value was below the design voltage established at 390–400 VDC, see FLC2 flowchart in Figure 9. Moreover, this voltage guaranteed the proper SOC of the lead-acid battery bank, always over limits values (see Figure 14).

From  $19 \text{ h} < t \leq 32 \text{ h}$ , an energy deficit situation appeared; the load demand increased and energy was required for the residential load and to charge the electric vehicle, while the supply from the PV panels went on decreasing until it was null. In this period, the load demand was guaranteed by the Li-ion battery bank (Figures 11a and 12a) and the main power grid support (Figures 11b and 12b). In energy deficit periods, the EMS criterium is to promote a joint use of the ESS and the main power grid, which is recommendable when the cost of purchasing energy is low. This allows a more conservative use of the microgrid's resources. The fuel cell operation was delayed until  $24 \text{ h} < t \leq 29 \text{ h}$  (Figures 11b and 12b), i.e., until the moment when the SOC of the Li-ion battery bank began to drop considerably (Figure 14). The power setpoint of each device that makes up the ESS was defined by FLC2 (Figure 9), and it was established that the hydrogen subsystem provides energy ( $P_{H_2-fuzz}(k) = \text{Positive}$ ) when  $\text{Low} \leq SOC_{Li-fuzz}(k) < \text{Medium}$  ( $40\% \leq SOC_{Li}(k) < 60\%$ ) and  $\text{Low} \leq HL-fuzz(k) < \text{Medium}$  ( $2 \text{ Nm}^3 \leq HL(k) < 10 \text{ Nm}^3$ ). This situation generated, obviously, the consequent decreasing of the stored hydrogen level (Figure 14). In the last part of the one-day period,  $29 \text{ h} < t \leq 32 \text{ h}$ , the residential load was supplied exclusively by the main power grid (Figures 11b and 12b). This is the case (see Figure 8) when  $C_{EP-fuzz}(k) \leq \text{Medium}$  ( $C_{EP}(k) \leq 0.075 \text{ €}$ ) and  $SOC_{ESS-fuzz}(k) < \text{Medium}$  ( $SOC_{Li}(k) = 50\%$  and  $HL(k) = 4 \text{ Nm}^3$ ), so  $P_{ESS-fuzz}(k) = \text{Zero}$  (Figures 11 and 12). During this interval, the lead-acid battery bank harnessed the energy availability to slightly increase its state of charge (Figure 14). This increasing was, sensibly, more accused at the beginning of the new period because  $P_{bal}(k)$  was positive, renewable (photovoltaic) power was available (see Figures 11 and 12).

The behavior described above was repeated during the following two days. It is possible to see from Figure 14 the little delay between the charging/discharging of the Li-ion battery bank and the hydrogen tank. The EMS prioritizes the use of the battery bank versus the hydrogen tank, with the aim to make more conservative use of the hydrogen-based devices and avoid them having a higher degradation rate. On the other hand, Figure 13 shows that the use of the lead-acid battery bank was reduced and was limited to guaranteeing the power balance during the switching transient of the rest of the systems, and to keep the voltage of the DC bus inside the allowed range ( $380 \text{ V} \leq V_{bus}(k) \leq 400 \text{ V}$ ). Really, the behavior is excellent because of the allowed margin, Equation (5):  $350 \text{ V} \leq V_{bus}(k) \leq 440 \text{ V}$ .

Finally, taking into account the main power grid utilization cost (Figure 15), the developed EMS allows a higher economic performance of the residential-type microgrid. It takes advantage of selling energy excess and promoting energy consumption in the most favorable situations according to the energy cost rate. Then, during the three-day test, the electricity invoice and grid utilization ascended up to €5.33 and 73 kWh in the case of the main power grid connection, while in the case of microgrid with hysteresis-based strategy, the cost associated with the use of the grid and grid utilization decreased to €0.5772, 11.17 kWh, and €0.8063, 15.76 kWh for low renewable fluctuations and variable generation profile, respectively. For the proposed fuzzy logic-based EMS, the electricity invoice and grid utilization descended to €0.15, 7.6 kWh, and €0.6, 18.07 kWh for low renewable fluctuations and variable generation profile, respectively. This means a cost saving of 97.2% and 88.74% for the full grid utilization, and 74.0% and 25.59% for the hysteresis-based EMS for favorable and variable generation profile, respectively. In light of the results, it can be seen how the proposed fuzzy logic-based strategy increases the economic performance of the system with respect to the other cases studied, considering the use of the grid and the purchase/sale price as an additional decision factor.

## 6. Conclusions

This paper has presented a fuzzy logic-based EMS for microgrids with hybrid ESS based on a batteries and hydrogen system, which ensures the power balance according to the load demand,

while taking into account the improvement of microgrid performance from a technical and economic point of view.

The fuzzy logic approach was chosen because: (1) linguistic rules are interpretable and they can simplify the management and control of complex microgrids, (2) it can incorporate expert knowledge that takes advantage of the accumulated knowledge about the microgrid, and (3) it does not need to dispose of the microgrid model to carry out the controller design.

The developed fuzzy logic-based EMS uses the knowledge from experts, which is incorporated into fuzzy rules bases. This allows the inclusion of both technical and economic criteria into the inference process, which ensures the power balance of the microgrid at all times, pursuing, in addition, its best performance and efficiency, ensuring the best lifespan of its elements and the most advantageous economic exchange with the main power grid.

On the other hand, with the objective to test the microgrid performance in a stress situation, the developed EMS has been subjected to a residential-type profile consumption for 72 hours (three days) and stable and fluctuating solar generation profiles. The residential profile is characterized by consumption valleys during the sunny hours, while consumption peaks take place at night, out of sunlight hours, compromising the use of battery and hydrogen storage system.

The results show that the fuzzy logic-based EMS guarantees the residential-type demand, while it keeps a conservative use of those systems that suffer higher degradation. Regarding economic criteria, the developed fuzzy logic-based EMS allows savings of up to €630/year in the electricity invoice.

**Author Contributions:** Conceptualization, F.S., A.P. and F.J.V.; methodology, A.P., F.S. and F.J.V.; software, A.P. and F.J.V.; experimental data acquisition and model validation, A.P. and J.L.S.; writing, F.J.V. and F.S.; supervision, F.S., J.M.A., F.I. and E.L.; All authors have read and agreed to the published version of the manuscript.

**Funding:** This research was funded by “Configuration and management of micro-grid based on renewable energy and hydrogen technology (H2SMART-  $\mu$ GRID)” Spanish Government, grant Ref: DPI2017-85540-R.

**Conflicts of Interest:** The authors declare no conflict of interest.

## List of Acronyms

DOD	Depth of discharge
EMS	Energy management system
ESS	Energy storage system
FLC	Fuzzy logic controller
INTA	(Spanish acronym) Instituto Nacional de Técnica Aeroespacial (Spanish Institute of Aerospace Technology)
PEM	Polymer electrolyte membrane
SOC	State of charge

## Notation and Symbols

$HL(k)$	Hydrogen storage level ( $\text{Nm}^3$ )
$P_{bal}(k)$	Power balance (W)
$P_{Els}(k)$	Electrolyser operating power (W)
$P_{ESS}(k)$	Energy storage system power (W)
$P_{EV}(k)$	Electric vehicle charging power (W)
$P_{FC}(k)$	Fuel cell operating power (W)
$P_{Grid}(k)$	Main power grid operating power (W)
$P_{GI}(k)$	Purchased power from the main power grid (W)
$P_{GO}(k)$	Sold power to the main power grid (W)
$P_{H_2}(k)$	Hydrogen system operating power (W)
$P_L(k)$	Residential load power (W)
$P_{La}(k)$	Lead-acid battery bank power (W)
$P_{Li}(k)$	Li-ion battery bank power (W)
$P_{PV}(k)$	Renewable (solar) power (W)
$SOC_{La}(k)$	State of charge of lead-acid battery bank (Ah)
$V_{bus}(k)$	DC bus voltage (V)

## References

1. Abid, S.; Alghamdi, T.A.; Haseeb, A.; Wadud, Z.; Ahmed, A.; Javaid, N. An Economical Energy Management Strategy for Viable Microgrid Modes. *Electronics* **2019**, *8*, 1442. [\[CrossRef\]](#)
2. Lin, R.H.; Zhao, Y.Y.; Wu, B.D. Toward a hydrogen society: Hydrogen and smart grid integration. *Int. J. Hydrog. Energy* **2020**. [\[CrossRef\]](#)
3. Adibi, M.M.; Martins, N. Impact of power system blackouts. In Proceedings of the IEEE Power and Energy Society General Meeting, Denver, CO, USA, 26–30 July 2015; pp. 1–15. [\[CrossRef\]](#)
4. Morrissey, K.; Plater, A.; Dean, M. The cost of electric power outages in the residential sector: A willingness to pay approach. *Appl. Energy* **2018**, *212*, 141–150. [\[CrossRef\]](#)
5. Shuai, M.; Chengzhi, W.; Shiwen, Y.; Hao, G.; Jufang, Y.; Hui, H. Review on Economic Loss Assessment of Power Outages. *Procedia Comput. Sci.* **2018**, *130*, 1158–1163. [\[CrossRef\]](#)
6. Brunaccini, G.; Sergi, F.; Aloisio, D.; Randazzo, N.; Ferraro, M.; Antonucci, V. Fuel cells hybrid systems for resilient microgrids. *Int. J. Hydrog. Energy* **2019**, *44*, 21162–21173. [\[CrossRef\]](#)
7. Sayed, K.; Abo-Khalil, A.G.; Alghamdi, A.S. Optimum Resilient Operation and Control DC Microgrid Based Electric Vehicles Charging Station Powered by Renewable Energy Sources. *Energies* **2019**, *12*, 4240. [\[CrossRef\]](#)
8. Kantamneni, A.; Brown, L.E.; Parker, G.; Weaver, W.W. Survey of multi-agent systems for microgrid control. *Eng. Appl. Artif. Intell.* **2015**, *45*, 192–203. [\[CrossRef\]](#)
9. Zia, M.F.; Elbouchikhi, E.; Benbouzid, M. Microgrids energy management systems: A critical review on methods, solutions, and prospects. *Appl. Energy* **2018**, *222*, 1033–1055. [\[CrossRef\]](#)
10. Oliveira, D.Q.; Zambroni de Souza, A.C.; Santos, M.V.; Almeida, A.B.; Lopes, B.I.L.; Saavedra, O.R. A fuzzy-based approach for microgrids islanded operation. *Electr. Power Syst. Res.* **2017**, *149*, 178–180. [\[CrossRef\]](#)
11. Monforti Ferrario, A.; Vivas, F.J.; Segura Manzano, F.; Andújar, J.M.; Bocci, E.; Martirano, L. Hydrogen vs. Battery in the Long-term Operation. A Comparative Between Energy Management Strategies for Hybrid Renewable Microgrids. *Electronics* **2020**, *9*, 698. [\[CrossRef\]](#)
12. Nespoli, A.; Mussetta, M.; Ogliari, E.; Leva, S.; Fernández-Ramírez, L.; García-Triviño, P. Robust 24 hours ahead forecast in a microgrid: A real case study. *Electronics* **2019**, *8*, 1434. [\[CrossRef\]](#)
13. Vivas, F.J.; De las Heras, A.; Segura, F.; Andújar, J.M. A review of energy management strategies for renewable hybrid energy systems with hydrogen backup. *Renew. Sustain. Energy Rev.* **2018**, *82*, 126–155. [\[CrossRef\]](#)
14. Torreglosa, J.P.; García, P.; Fernández, L.M.; Jurado, F. Energy dispatching based on predictive controller of an off-grid wind turbine/photovoltaic/hydrogen/battery hybrid system. *Renew. Energy* **2015**, *74*, 326–336. [\[CrossRef\]](#)
15. Tesfahunegn, S.G.; Ulleberg, Ø.; Vie, P.J.S.; Undeland, T.M. Optimal shifting of Photovoltaic and load fluctuations from fuel cell and electrolyzer to lead acid battery in a Photovoltaic/hydrogen standalone power system for improved performance and life time. *J. Power Sources* **2011**, *196*, 10401–10414. [\[CrossRef\]](#)
16. Ipsakis, D.; Voutetakis, S.; Seferlis, P.; Stergiopoulos, F.; Papadopoulou, S.; Elmasides, C. The effect of the hysteresis band on power management strategies in a stand-alone power system. *Energy* **2008**, *33*, 1537–1550. [\[CrossRef\]](#)
17. Zhang, F.; Thanapalan, K.; Procter, A.; Carr, S.; Maddy, J.; Premier, G. Power management control for off-grid solar hydrogen production and utilisation system. *Int. J. Hydrog. Energy* **2013**, *38*, 4334–4341. [\[CrossRef\]](#)
18. Athari, M.H.; Ardehali, M.M. Operational performance of energy storage as function of electricity prices for on-grid hybrid renewable energy system by optimized fuzzy logic controller. *Renew. Energy* **2016**, *85*, 890–902. [\[CrossRef\]](#)
19. García, P.; Torreglosa, J.P.; Fernández, L.M.; Jurado, F. Optimal energy management system for stand-alone wind turbine/photovoltaic/ hydrogen/battery hybrid system with supervisory control based on fuzzy logic. *Int. J. Hydrog. Energy* **2013**, *38*, 14146–14158. [\[CrossRef\]](#)
20. Bordons, C.; García-Torres, F.; Valverde, L. Gestión Óptima de la Energía en Microrredes con Generación Renovable. *RIAI Rev. Iberoam. Autom. Inform. Ind.* **2015**, *12*, 117–132. [\[CrossRef\]](#)
21. Talebian, M.E.; Plant, P.; Sobhani, S.; Borzooi, A. New Hybrid System of Fuel Cell Power Plant and Wind Turbine for Household Consumption. In Proceedings of the 3rd International Conference on Electric Power and Energy Conversion Systems, Istanbul, Turkey, 2–4 October 2013.

22. Wang, X.; Tong, C.; Palazoglu, A.; El-Farra, N.H. Energy Management for the Chlor-Alkali Process with Hybrid Renewable Energy Generation using Receding Horizon Optimization. In Proceedings of the 53rd IEEE Conference on Decision and Control, Los Angeles, CA, USA, 15–17 December 2014.
23. Zhou, K.; Ferreira, J.A.; de Haan, S.W.H. Optimal energy management strategy and system sizing method for stand-alone photovoltaic-hydrogen systems. *Int. J. Hydrog. Energy* **2008**, *33*, 477–489. [[CrossRef](#)]
24. Vivas, F.J.; De las Heras, A.; Segura, F.; Andújar, J.M. H2RES2 simulator. A new solution for hydrogen hybridization with renewable energy sources-based systems. *Int. J. Hydrog. Energy* **2017**, *42*, 13510–13531. [[CrossRef](#)]
25. Segura, F.; Andújar, J.M. Power management based on sliding control applied to fuel cell systems: A further step towards the hybrid control concept. *Appl. Energy* **2012**, *99*, 213–225. [[CrossRef](#)]
26. Andújar, J.M.; Bravo, J.M.; Peregrín, A. Stability analysis and synthesis of multivariable fuzzy systems using interval arithmetic. *Fuzzy Sets Syst.* **2004**, *148*, 337–353. [[CrossRef](#)]
27. Mamdani, E.H.; Assilian, S. An experiment in linguistic synthesis with a fuzzy logic controller. *Int. J. Man. Mach. Stud.* **1975**, *7*, 1–13. [[CrossRef](#)]
28. Bilodeau, A.; Agbossou, K. Control analysis of renewable energy system with hydrogen storage for residential applications. *J. Power Sources* **2006**, *162*, 757–764. [[CrossRef](#)]
29. Harrag, A.; Messalti, S. How fuzzy logic can improve PEM fuel cell MPPT performances? *Int. J. Hydrog. Energy* **2018**, *43*, 537–550. [[CrossRef](#)]
30. Casteleiro-Roca, J.-L.; Barragán, A.J.; Manzano, F.S.; Calvo-Rolle, J.L.; Andújar, J.M. Fuel Cell Hybrid Model for Predicting Hydrogen Inflow through Energy Demand. *Electronics* **2019**, *8*, 1325. [[CrossRef](#)]
31. Ngamroo, I. Application of electrolyzer to alleviate power fluctuation in a stand alone microgrid based on an optimal fuzzy PID control. *Int. J. Electr. Power Energy Syst.* **2012**, *43*, 969–976. [[CrossRef](#)]
32. Bukhari, S.B.A.; Haider, R.; Saeed Uz Zaman, M.; Oh, Y.S.; Cho, G.J.; Kim, C.H. An interval type-2 fuzzy logic based strategy for microgrid protection. *Int. J. Electr. Power Energy Syst.* **2018**, *98*, 209–218. [[CrossRef](#)]
33. Stewart, E.M.; Lutz, A.E.; Schoenung, S.; Chiesa, M.; Keller, J.O.; Fletcher, J.; Ault, G.; McDonald, J.; Cruden, A. Modeling, analysis and control system development for the Italian hydrogen house. *Int. J. Hydrog. Energy* **2009**, *34*, 1638–1646. [[CrossRef](#)]
34. Kamel, A.; Rezk, H.; Shehata, N.; Thomas, J. Energy Management of a DC Microgrid Composed of Photovoltaic/Fuel Cell/Battery/Supercapacitor Systems. *Batteries* **2019**, *5*, 63. [[CrossRef](#)]
35. El-Bidairi, K.S.; Duc Nguyen, H.; Jayasinghe, S.D.G.; Mahmoud, T.S.; Penesis, I. A hybrid energy management and battery size optimization for standalone microgrids: A case study for Flinders Island, Australia. *Energy Convers. Manag.* **2018**, *175*, 192–212. [[CrossRef](#)]



© 2020 by the authors. Licensee MDPI, Basel, Switzerland. This article is an open access article distributed under the terms and conditions of the Creative Commons Attribution (CC BY) license (<http://creativecommons.org/licenses/by/4.0/>).