

Respiratory symptoms are more common among short sleepers independent of obesity

Erla Björnsdóttir,^{1,2} Christer Janson,³ Eva Lindberg,³ Erna Sif Arnardóttir,^{1,4} Bryndís Benediktsdóttir,^{1,4} Judith Garcia-Aymerich,^{5,6,7} Anne Elie Carsin,^{5,6,7} Francisco Gómez Real,⁸ Kjell Torén,⁹ Joachim Heinrich,^{10,11} Dennis Nowak,¹⁰ José Luis Sánchez-Ramos,¹² Pascal Demoly,¹³ Sandra Dorado Arenas,¹⁴ Ramon Coloma Navarro,¹⁵ Vivi Schlünssen,^{16,17} Chantal Raheerison,¹⁸ Debbie L Jarvis,^{19,20} Thorarinn Gislason^{1,4}

To cite: Björnsdóttir E, Janson C, Lindberg E, *et al.* Respiratory symptoms are more common among short sleepers independent of obesity. *BMJ Open Resp Res* 2017;**4**:e000206. doi:10.1136/bmjresp-2017-000206

Received 18 April 2017
Accepted 27 June 2017

ABSTRACT

Introduction Sleep length has been associated with obesity and various adverse health outcomes. The possible association of sleep length and respiratory symptoms has not been previously described. The aim of this study was to investigate the association between sleep length and respiratory symptoms and whether such an association existed independent of obesity.

Methods This is a multicentre, cross-sectional, population-based study performed in 23 centres in 10 different countries. Participants (n=5079, 52.3% males) were adults in the third follow-up of the European Community Respiratory Health Survey III. The mean±SD age was 54.2±7.1 (age range 39–67 years). Information was collected on general and respiratory health and sleep characteristics.

Results The mean reported nighttime sleep duration was 6.9±1.0 hours. Short sleepers (<6 hours per night) were n=387 (7.6%) and long sleepers (≥9 hours per night) were n=271 (4.3%). Short sleepers were significantly more likely to report all respiratory symptoms (wheezing, waking up with chest tightness, shortness of breath, coughing, phlegm and bronchitis) except asthma after adjusting for age, gender, body mass index (BMI), centre, marital status, exercise and smoking. Excluding BMI from the model covariates did not affect the results. Short sleep was related to 11 out of 16 respiratory and nasal symptoms among subjects with BMI ≥30 and 9 out of 16 symptoms among subjects with BMI <30. Much fewer symptoms were related to long sleep, both for subjects with BMI <30 and ≥30.

Conclusions Our results show that short sleep duration is associated with many common respiratory symptoms, and this relationship is independent of obesity.

INTRODUCTION

Over the past several decades, the prevalence of obesity has grown to epidemic proportions.^{1,2} At the same time, there has been a similar epidemic of chronic sleep deprivation.^{2–4} Studies have shown that the average sleep duration has decreased 1–2 hours over the last decades.² According to annual surveys

Key messages

What is the key question?

Is sleep length associated with respiratory health and is this relationship independent of obesity?

What is the bottom line?

Short sleep duration is associated with many common respiratory symptoms, and this relationship is independent of obesity.

Why read on?

Respiratory symptoms have so far not been the main focus in studies on causal pathways of short sleep duration but, given our results, some respiratory symptoms might directly impact sleep quality and increase the risk of short sleep duration.

done by the National Sleep Foundation, by 1998, only 35% of American adults were obtaining 8 hours of sleep and that number had fallen to 20% on weekdays by 2008.² It has also been reported that up to 30% of adult men and women between the ages of 30 and 64 years sleep less than 6 hours per night.⁴

Sleep duration has been related to many important adverse effects on health.^{5–10} Short sleep duration has been associated with diabetes, hypertension,¹⁰ cardiovascular disease (CVD)^{8,9} and increased mortality.^{5–7} A recent meta-analysis of cross-sectional studies on sleep duration and the metabolic syndrome showed that sleep duration under 5 hours significantly increased the risk for metabolic syndrome independently of other known risk factors.¹¹

Obesity is strongly associated with respiratory health, and sleep length is associated with obesity. The adverse health effects of sleep duration have been associated with body weight as both short sleepers and long



CrossMark

For numbered affiliations see end of article.

Correspondence to

Dr Thorarinn Gislason; thorarig@landspitali.is

sleepers are at an increased risk for obesity.^{12–14} In a recent meta-analysis of 16 studies including in total 285 452 adults, both short sleep duration and long sleep duration were associated with an increased risk of weight gain, but only short sleep duration increased the risk of obesity.¹⁵ However, obesity has also been identified as a risk factor for both asthma¹⁶ and chronic bronchitis,¹⁷ as well as obstructive sleep apnoea (OSA).¹⁸ In addition, several respiratory symptoms are related to obesity.^{19 20} Despite the reported associations between sleep length and obesity, and obesity and respiratory health, to the best of our knowledge, no published studies have shown whether there is an independent association between sleep duration and respiratory symptoms. Since existing data show associations of both obesity and sleep duration and obesity and respiratory health, it is important to explore the associations of sleep duration and respiratory health and the role of obesity in this context.

The aim of this study was to investigate the possible association between sleep length and respiratory symptoms and whether it is independent of obesity.

METHODS

Subjects

This is a cross-sectional study, and participants are adults taking part in the third follow-up of the European Community Respiratory Health Survey (ECRHS, www.ecrhs.org) III, an international, multicentre, population-based study of asthma and allergy, which was first performed in the early 1990s. Detailed descriptions of the methods for ECRHS I and ECRHS II have been published elsewhere.^{21 22} Briefly, participating centres were first randomly selected samples of subjects aged 20–44 years. Participants completed a short postal questionnaire about asthma and asthma-like symptoms (sample 1). Additionally, about 20% random subsamples of responders were invited for a more detailed questionnaire administered by an interviewer (sample 2). Participants in this study belong to sample 2.

Ethical approval for the study from local research ethics committees and written consent from participants were obtained.

Questionnaires and measurements

Participants completed the core ECRHS questionnaires on smoking, other lifestyle and environmental factors, general and respiratory health and chronic disorders. ‘Ever asthma’ was defined as reporting ever having had asthma where the diagnosis had been confirmed by a doctor, and ‘Current asthma’ was defined as having at least one asthma-related symptom in the last 12 months. Participants were also asked whether they had a problem with sneezing or a runny or blocked nose without having the influenza in the last 12 months.

Chronic obstructive pulmonary disease (COPD) was considered present if subjects reported physician-diagnosed COPD. Chronic bronchitis was defined as having

cough or phlegm for at least 3 months every year for at least two consecutive years. The presence of CVD was determined by a positive response to ever having angina, heart attack, coronary heart disease or stroke. Nocturnal gastro-oesophageal reflux (nGOR) was defined as reporting heartburn or belching when in bed more often than once a week for the last 3 months.

Information on diagnosed depression, hypertension, diabetes and stroke was also collected.

Subjects were asked how often they usually exercised so much that they get out of breath or sweat. Answers ranged from never to every day, and those who answered ≥ 2 times per week were considered to exercise on a regular basis.

Height and weight was measured by field workers according to a standardised procedure.

Sleep-related questions

All participants were asked to fill in a short questionnaire on their sleep (see supplement). Participants answered the question: how much sleep do you estimate that you get on average each night? They were classified as short sleepers (<6 hours/night), normal sleepers (6–9 hours/night) and long sleepers (≥ 9 hours/night), in accordance with classifications used in most previous studies on health effects of sleep duration.^{7–9 12 13} Participants also answered the Epworth Sleepiness Scale.²³

Statistical methods

Data are presented as number and percentage or means \pm one SD, depending on distribution. For bivariate analysis, the χ^2 test, t-test and one-way analysis of variance were used for nominal and continuous variables. Logistic regression was used for multivariable analyses to estimate the association between sleep length and respiratory symptoms. Given that obesity is strongly related to both sleep length and to respiratory disorders, multivariable models were built both with and without BMI adjustment. We also stratified results according to BMI into two groups: subjects with BMI <30 and BMI ≥ 30 . The logistic regression models for the association between short sleep and respiratory symptoms and disorders were also fitted separately for each country. Results for the association were pooled across countries using random effects meta-analysis. Heterogeneity between the countries in the association between short sleep and respiratory health were analysed. STATA V.13.0 was used for all statistical analyses.

RESULTS

The study cohort

We included a total of 5079 subjects (52.3% males) from 23 centres in 10 countries (Australia, Britain, Denmark, Estonia, France, Germany, Iceland, Norway, Spain and Sweden).

Table 1 Characteristics of short, normal and long sleepers

	Short sleepers (<6 hours per night) n=387	Normal sleepers (6–9 hours per night) n=4475	Short compared with normal sleepers p Value	Long sleepers (≥ 9 hours per night) n=217	Long compared with normal sleepers p Value
Male (%)	48.3	48.2	0.957	37.8	0.003
Age (years)	55.1 \pm 6.4	54.1 \pm 7.1	0.009	55.8 \pm 7.1	<0.001
BMI (kg/m ²)	28.3 \pm 5.7	26.9 \pm 4.7	<0.001	27.4 \pm 5.4	0.04
ESS total	7.8 \pm 4.7	6.7 \pm 3.9	<0.001	6.4 \pm 4.7	0.25
BMI >30 (%)	37.2	27.1	<0.001	33.2	0.048
Married (%)	66.2	76.0	<0.001	65.7	0.013
Current smokers (%)	42.3	32.3	0.002	34.8	0.536
Exercise $\geq 2 \times$ per week (%)	37.6	46.1	0.001	39.4	0.06
<i>Reported lifetime morbidity</i>					
CVD (%)	5.0	3.9	0.31	6.1	0.12
Diabetes (%)	8.4	3.5	<0.001	6.1	0.05
Hypertension (%)	32.6	21.8	<0.001	23.8	0.48
Depression (%)	21.7	15.3	0.001	32.9	<0.001

Significance is marked as bold.

BMI, body mass index; CVD, cardiovascular disease; ESS, Epworth Sleepiness Scale.

The mean age (\pm SD) of the cohort was 54.2 \pm 7.1 years (range: 39–67 years), mean BMI was 27.0 \pm 4.8 kg/m², 28.1% were obese (BMI ≥ 30), 33.2% were current smokers, 22.7% reported hypertension and 4.0% reported diabetes.

The mean sleep duration was 6.9 \pm 1.0 hours per night. Overall, the majority of subjects (88.1%) were normal sleepers (reporting sleeping 6–9 hours per night). Short sleepers (<6 hours per night) and long sleepers (≥ 9 hours per night) were 387 (7.6%) and 217 (4.3%) of the sample, respectively. Compared with short sleepers, normal sleepers were younger, had a lower BMI, were less likely to smoke, report hypertension or diabetes and were more likely to be married and to report exercising regularly. Additionally, short sleepers had a higher prevalence of diabetes, hypertension and depression as compared with normal sleepers. Long sleepers were older, more likely to be females, had a higher BMI, were less likely to be married and had a higher prevalence of diabetes and depression as compared with normal sleepers (table 1).

The box plot in figure 1 shows the median number of hours slept per night and the range of reported sleep duration in the different centres in the study. Even though the median is the same between all centres (7 hours), there was a considerable variation in range and reported mean sleep duration between centres, ranging from 6.4 in Huelva, Spain, to 7.1 hours per night in Reykjavik, Iceland ($p < 0.0001$) (see figure 1).

There was also a considerable difference between centres in the prevalence of being a short sleeper (the lowest was 2% in Aarhus, Denmark, and the highest was

20.7% in Huelva, Spain) (figure 2). The prevalence of long sleepers varied from 1.7% in Bergen, Norway, to 9.8% in Oviedo, Spain.

SLEEP LENGTH AND RESPIRATORY SYMPTOMS

All respiratory symptoms were more common in short sleepers as compared with normal sleepers (table 2). The prevalence of reporting having a blocked nose was also higher among short sleepers as compared with normal sleepers. Furthermore, short sleepers had a higher reported prevalence of nGOR and COPD as compared with normal sleepers. The only significant difference between long sleepers and normal sleepers was a higher prevalence of reporting shortness of breath after strenuous activity in long sleepers (table 2).

In the adjusted model, short sleep was associated to all respiratory and nasal symptoms except ever asthma and nasal allergies when the adjustment was without BMI. When BMI was also adjusted for, all symptoms except asthma were still associated with short sleep. Only a few symptoms were associated with long sleep duration (table 3).

The pooled estimates of the meta analyses of the association between short sleep and the respiratory variables were very similar to those found in table 3 (data not shown). No significant heterogeneity between the centres was found with the exception of the association between short sleep and shortness of breath following activity ($p_{\text{heterogeneity}} = 0.04$), being woken by cough ($p_{\text{heterogeneity}} = 0.01$) and cough during day and night in the winter ($p_{\text{heterogeneity}} = 0.03$).

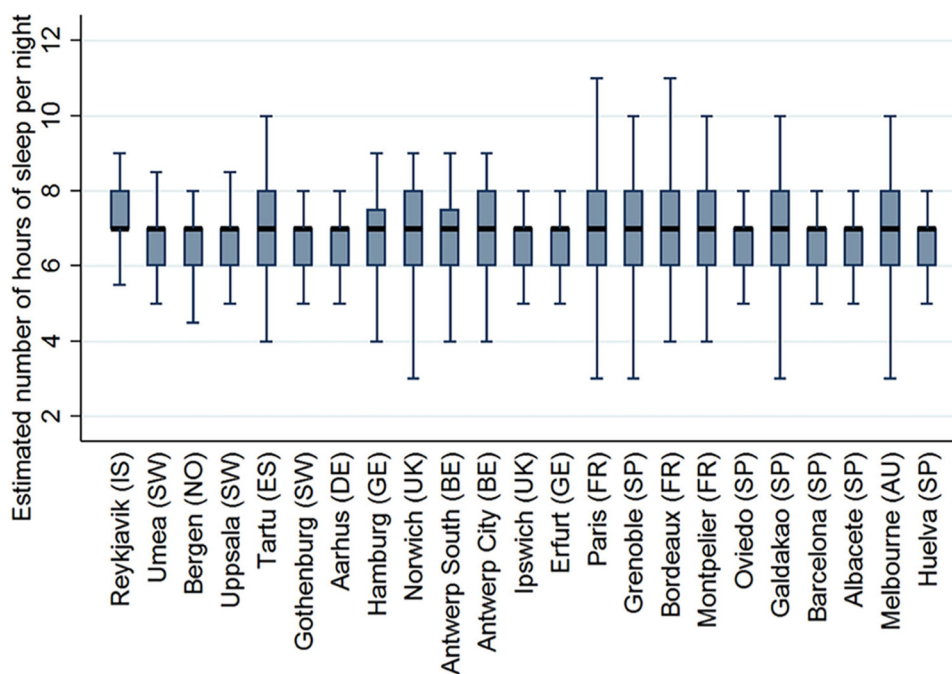


Figure 1 The median number of hours slept per night and the range in sleep length in different centres. Centres are sorted by latitude (from North to South).

Table 4 shows the adjusted associations of respiratory and nasal symptoms and sleep length for subjects with BMI <30 and BMI ≥30. Short sleep was related to 11 out of 16 nasal and respiratory symptoms among subjects

with BMI ≥30 and 9 out of 16 symptoms among subjects with BMI <30. Much fewer symptoms were related to long sleep, both for subjects with BMI <30 and ≥30 (table 4).

% of short sleepers

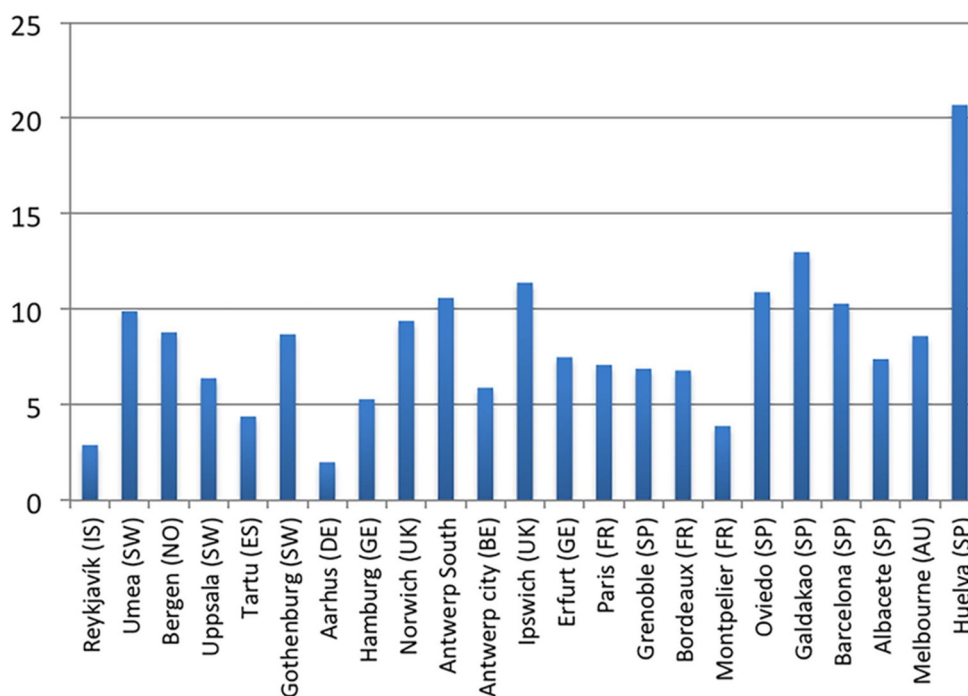


Figure 2 The prevalence (%) of being a short sleeper in different centres. Centres are sorted by latitude (from North to South).

Table 2 The prevalence (%) of respiratory symptoms among short, normal and long sleepers

	Short sleepers (<6 hours per night) n=462	Normal sleepers (6–9 hours per night) n=5136	Short compared with normal sleepers p Value	Long sleepers (≥9 hours per night) n=252	Long compared with normal sleepers p Value
Wheezing last 12 months	35.7	23.2	<0.001	25.4	0.951
Woken with chest tightness last 12 months	26.0	13.3	<0.001	17.7	0.105
Shortness of breath while at rest last 12 months	14.0	6.8	<0.001	7.9	0.291
Shortness of breath after strenuous activity last 12 months	33.1	21.7	<0.001	30.2	0.006
Woken with shortness of breath last 12 months	15.3	7.7	<0.001	8.1	0.152
Woken by coughing last 12 months	41.1	31.1	0.001	33.5	0.857
Cough in morning during the winter	18.7	10.8	<0.001	17.1	0.102
Cough during day or night during the winter	27.4	15.1	<0.001	19.1	0.928
Phlegm in morning during the winter	20.7	12.7	<0.001	16.0	0.635
Phlegm during day or night during the winter	19.3	10.1	<0.001	14.1	0.512
Chronic bronchitis	10.8	6.2	0.011	9.6	0.420
nGOR	20.0	14.0	<0.001	14.5	0.984
Asthma ever	17.5	18.9	0.474	23.1	0.224
COPD	2.2	1.2	0.017	2.0	0.590
Nasal allergies including hay fever	33.4	33.9	0.899	34.7	0.551
Nose blocked for >12 weeks last 12 months	14.3	7.1	<0.001	10.0	0.244

Significance ($p < 0.05$) is marked as bold. p Values show comparisons of short sleepers versus normal sleepers and long sleepers versus normal sleepers.

COPD, chronic obstructive pulmonary disease; nGOR, nocturnal gastro-oesophageal reflux.

DISCUSSION

Our results show that short sleep duration is associated with many common respiratory symptoms and that this relationship is independent of obesity.

Given the known relationship between sleep duration and obesity,¹⁵ and obesity and respiratory symptoms,^{19,20} our hypothesis was that obesity was an important mediator to a possible association between sleep duration and respiratory symptoms. Interestingly, we found a significant relationship between short sleep duration and respiratory symptoms independent of obesity.

Previous studies have shown a strong relationship between sleep duration and obesity,¹⁵ hypertension¹⁰ and CVD.⁹ A recent study by Patel *et al*²⁴ found that short sleep was significantly associated with obesity with an OR of 1.29 (95% CI 1.12 to 1.49) and a recent meta-analysis¹¹ showed a U-shaped dose–response relationship between extremes of sleep duration and metabolic syndrome. Metabolic syndrome has also been shown to be an independent risk factor for worsening of respiratory symptoms, lung function impairment and asthma.²⁵ In our analysis, we made adjustments with and without

BMI in order to better understand the role of BMI in the associations of sleep length and respiratory symptoms. We also divided our sample into two groups, a group with BMI <30 and BMI ≥30. We found in both groups a significant relationship between short sleep and respiratory symptoms. The high prevalence of respiratory symptoms associated with short sleep is therefore unlikely to be driven by the known associations of short sleep and obesity.

Our hypothesis was that obesity was a mediator in the relationship between sleep duration and respiratory symptoms. However, our results indicate a direct relationship not mediated by BMI. It is possible that respiratory symptoms are directly disrupting sleep (people waking up because of coughing, blocked nose, and so on). Others have reported associations between sleep disturbances and respiratory disorders. Klink and Quan²⁶ found that individuals with asthma and bronchitis reported a high prevalence of difficulties initiating and maintaining sleep as well as daytime sleepiness. Leng *et al*²⁷ recently reported an association of excessive daytime napping with increased respiratory symptoms. In another general

Table 3 Adjusted associations of respiratory symptoms and being short sleeper and long sleeper. Adjustment with † and without* BMI

	Short sleepers Adj. OR (95% CI) without BMI*	Short sleepers Adj. OR (95% CI) with BMI †	Long sleepers Adj. OR (95% CI) without BMI*	Long sleepers Adj. OR (95% CI) with BMI
Wheezing last 12 months	1.76 (1.29–2.39)	1.54 (1.12–2.13)	0.94 (0.60–1.45)	0.94 (0.59–1.50)
Woken with chest tightness last 12 months	2.37 (1.67–3.36)	2.10 (1.45–3.03)	1.24 (0.75–2.04)	0.98 (0.55–1.76)
Shortness of breath while at rest last 12 months	2.47 (1.54–3.95)	2.42 (1.49–3.93)	1.30 (0.64–2.66)	0.97 (0.41–2.29)
Shortness of breath after strenuous activity last 12 months	1.81 (1.32–2.49)	1.55 (1.10–2.19)	1.75 (1.19–2.58)	1.80 (1.17–2.77)
Woken with shortness of breath last 12 months	2.48 (1.62–3.81)	2.40 (1.55–3.72)	1.94 (1.07–3.51)	1.66 (0.85–3.22)
Woken by coughing last 12 months	1.54 (1.15–2.07)	1.43 (1.05–1.94)	1.12 (0.76–1.63)	1.10 (0.73–1.66)
Cough in morning during the winter	1.96 (1.37–2.83)	2.01 (1.38–2.92)	1.51 (0.92–2.47)	1.68 (1.00–2.80)
Cough during day or night during the winter	1.91 (1.37–2.66)	1.91 (1.35–2.70)	0.97 (0.58–1.60)	1.06 (0.63–1.79)
Phlegm in morning during the winter	1.83 (1.28–2.61)	1.81 (1.26–2.62)	1.24 (0.75–2.05)	1.28 (0.75–2.18)
Phlegm during day or night during the winter	2.00 (1.38–2.90)	2.02 (1.38–2.96)	1.17 (0.67–2.05)	1.04 (0.56–1.93)
Chronic bronchitis	1.74 (1.10–2.77)	1.63 (1.00–2.66)	1.39 (0.74–2.60)	1.29 (0.65–2.55)
Asthma ever	1.11 (0.73–1.69)	0.97 (0.62–1.52)	1.51 (0.95–2.42)	1.54 (0.93–2.54)
nGOR	1.82 (1.27–2.60)	1.74 (1.20–2.52)	0.87 (0.52–1.45)	0.92 (0.54–1.58)
Chronic bronchitis	1.74 (1.10–2.77)	1.63 (1.00–2.66)	1.39 (0.75–2.60)	1.23 (0.65–2.54)
COPD	2.73 (1.26–5.91)	2.64 (1.15–6.06)	1.30 (0.39–4.39)	1.98 (0.23–4.25)
Nasal allergies including hay fever	1.18 (0.86–1.62)	2.64 (1.15–6.06)	1.09 (0.74–1.61)	0.98 (0.23–4.25)
Nose blocked for >12 weeks last 12 months	2.66 (1.72–4.10)	2.66 (1.71–4.14)	2.07 (1.17–3.69)	1.74 (0.90–3.37)

Significance ($p < 0.05$) is marked as bold. Logistic regression model. Normal sleep length was used as a reference group.

*Adjusted for gender, age, centre, marital status, exercise and current smoking.

†Adjusted for gender, age, centre, marital status, exercise and current smoking and BMI.

BMI, body mass index; COPD, chronic obstructive pulmonary disease; nGOR, nocturnal gastro-oesophageal reflux.

population study, specific respiratory symptoms such as coughing and wheezing were more predictive of sleep complaints than lung function or diagnosis of a lung disease.²⁸ Furthermore, patients with COPD often experience sleep problems that lead to impaired quality of life.²⁹ We have previously reported an association between asthma and reduced sleep quality and increased daytime sleepiness,^{30 31} and an association between asthma and short sleep duration was recently reported in a large sample of Korean females, aged 19–29 years.³² Others have reported similar associations in children.³³ Furthermore, several studies have reported associations between respiratory symptoms and insomnia.^{34 35} It is however important to note that short sleepers in our study were more likely to smoke and even though we adjusted for this in our analysis this could account for some of the increase in respiratory symptoms in this group.

A relationship between untreated OSA and difficulties maintaining sleep has also been shown,³⁶ where nighttime awakenings improve if OSA is treated,³⁷ which supports the theory of respiratory disorders disrupting sleep. Short sleep could therefore be a marker of OSA, which is known to be associated to nGOR and other respiratory symptoms.³⁸ Other studies have shown an

association between OSA and short sleep duration.³⁹ The subjects in our study from the Icelandic centre did however all have an overnight sleep study where OSA was estimated⁴⁰ and those who were diagnosed with OSA did not report shorter sleep than the other subjects.

Respiratory symptoms have so far not been the main focus in studies on causal pathways of short sleep duration, but given our results some respiratory symptoms might directly impact sleep quality and increase the risk of short sleep duration. Our results indicate that sleep length needs to be one of the variables studied when exploring respiratory symptoms, and it may also be important for clinician working with respiratory patients to ask about their sleep habits.

In the present study, we also found that being a long sleeper was associated with a few respiratory symptoms and disorders. Others have reported associations between having asthma and being a long sleeper,⁴¹ which we replicated in this study among subjects with BMI ≥ 30 only. Many previous studies have also shown a strong association between long sleep, depression and increased mortality.^{41 42} The reason for the association between these respiratory symptoms and long sleep is not clear. It is possible that those with a history of respiratory

Table 4 The adjusted* associations of respiratory disorders and sleep length for subjects with BMI <30 and subjects with BMI ≥30

	Short sleepers n=387		Long sleepers n=217	
	BMI <30 n=243	BMI ≥30 n=144	BMI <30 n=145	BMI ≥30 n=72
Wheezing last 12 months	1.37 (0.92–2.04)	2.55 (1.53–4.26)	0.89 (0.51–1.56)	1.00 (0.48–2.12)
Woken with tight chest last 12 months	2.16 (1.39–3.37)	3.22 (1.75–5.94)	1.02 (0.53–1.98)	1.59 (0.70–3.62)
Shortness of breath while in rest last 12 months	3.13 (1.74–5.63)	1.37 (0.59–3.19)	1.08 (0.38–3.07)	1.58 (0.55–4.50)
Shortness of breath after activity last 12 months	1.47 (0.96–2.26)	2.33 (1.38–3.93)	1.94 (1.19–3.18)	1.48 (0.75–2.91)
Woken by shortness of breath last 12 months	2.51 (1.45–4.35)	2.48 (1.21–5.07)	2.86 (1.43–5.72)	0.87 (0.25–3.03)
Woken by coughing last 12 months	1.24 (0.85–1.81)	2.32 (1.40–3.85)	1.07 (0.67–1.72)	1.29 (0.66–2.54)
Cough in morning during the winter	1.71 (1.06–2.74)	2.45 (1.34–4.50)	1.30 (0.68–2.47)	2.38 (1.06–5.38)
Cough during day and night during the winter	1.72 (1.11–2.65)	2.32 (1.34–4.04)	1.01 (0.54–1.89)	0.84 (0.35–2.02)
Phlegm in morning during the winter	1.79 (1.14–2.83)	1.80 (1.00–3.25)	1.44 (0.79–2.65)	0.93 (0.36–2.39)
Phlegm during day and night during the winter	1.91 (1.19–3.06)	2.17 (1.15–4.09)	0.84 (0.39–1.83)	1.85 (0.78–4.39)
Asthma ever	1.02 (0.60–1.75)	1.27 (0.62–2.61)	1.09 (0.58–2.07)	2.78 (1.31–5.90)
nGOR	2.16 (1.36–3.41)	1.37 (0.75–2.49)	1.26 (0.70–2.27)	0.40 (0.13–1.18)
Chronic bronchitis	1.50 (0.77–2.88)	1.95 (0.97–3.95)	1.45 (0.67–3.12)	1.29 (0.42–3.94)
COPD	1.50 (0.78–2.88)	5.67 (1.62–19.8)	1.45 (0.67–3.13)	2.41 (0.46–12.7)
Nasal allergies including hay fever	1.16 (0.77–1.73)	1.26 (0.73–2.17)	1.19 (0.74–1.90)	0.94 (0.46–1.95)
Nose blocked for more than 12 weeks for the last 12 months	2.59 (1.49–4.49)	2.77 (1.31–5.84)	1.40 (0.62–3.15)	4.10 (1.67–10.08)

*Adjusted for gender, age, centre, marital status, exercise and current smoking. Significance ($p < 0.05$) is marked as bold. Logistic regression model. Normal sleep length was used as a reference group.

BMI, body mass index; COPD, chronic obstructive pulmonary disease; nGOR, nocturnal gastro-oesophageal reflux.

symptoms are more unwell and less active, which could facilitate longer sleep.⁴¹ Also, increased inflammation and elevated cytokines among subjects with respiratory symptoms could lead to increased fatigue and hence produce longer sleep.^{43–45} Our results show that short sleep is much more strongly related to respiratory symptoms than long sleep, but these associations need to be studied further.

There were considerable differences in sleep duration in different centres in our study and the highest percentage of short sleepers were in the Spanish centres. Cultural differences, such as siestas or afternoon napping, may impact sleep duration.

There are several limitations of this study that need to be considered. Our results are from a cross-sectional study, and deeper understanding of the underlying causal pathways can only come from prospective or intervention studies. Information regarding sleep duration was self-reported without any objective measure on sleep time. However, sleep length, as reported in questionnaires, correlates well with sleep diaries.⁷ Also, most symptoms were reported as present for the past 12 months, and therefore it is not clear if these symptoms were currently

present when the study took place. Furthermore, we did not have information on daytime napping, which could affect nighttime sleep length. The strengths of this study include the population-based nature of this large sample from many centres in 10 different countries and the use of standardised and validated procedures and instruments.

To summarise, our results show that reporting respiratory symptoms is related to sleep duration, especially with reported short sleep. Short sleepers report more respiratory symptoms, and this association is not confined to those who are obese. To our knowledge, this is the first report of an association between respiratory symptoms and sleep length in a large population-based cohort of middle-aged subjects. There is a need for prospective studies on sleep length and respiratory symptoms in order to clarify how short and/or long sleep are associated to respiratory health.

Author affiliations

¹Department of Respiratory Medicine and Sleep, Landspítali - The National University Hospital of Iceland, Reykjavík, Iceland

²Faculty of Medicine, University of Iceland, Reykjavík, Iceland

³Department of Medical Sciences: Respiratory, Allergy and Sleep Research, Uppsala University, Uppsala, Sweden

⁴Faculty of Medicine, University of Iceland, Reykjavik, Iceland

⁵ISGlobal, Centre for Research in Environmental Epidemiology (CREAL), Barcelona, Spain

⁶Universitat Pompeu Fabra (UPF), Barcelona, Spain

⁷CIBER Epidemiología y Salud Pública (CIBERESP), Barcelona, Spain

⁸Department of Clinical Science, University of Bergen, Bergen, Norway

⁹Department of Occupational and Environmental Medicine, Institute of Medicine, Sahlgrenska Academy, University of Gothenburg, Gothenburg, Sweden

¹⁰Ludwig Maximilians University Munich, Ludwig Maximilians University Munich, University Hospital Munich, Institute and Outpatient Clinic for Occupational, Social and Environmental Medicine, Munich, Germany

¹¹Helmholtz Zentrum München, German Research Center for Environmental Health, Institute of Epidemiology I, Neuherberg, Germany

¹²Department of Nursing, University of Huelva, Huelva, Spain

¹³Department of Pneumology, University Hospital of Montpellier, Montpellier, France

¹⁴Pulmonology Department, Galdakao-Usansolo Hospital, Biscay, Spain

¹⁵Unidad del Sueño, Servicio de Neumología, Hospital General Universitario, Albacete, Spain

¹⁶Department of Public Health, Aarhus University, Aarhus, Denmark

¹⁷National Research Centre for the Working Environment, Copenhagen, Denmark

¹⁸U1219, Bordeaux Population Health Research Center, Bordeaux, France

¹⁹Population Health and Occupational Disease, National Heart and Lung Institute, Imperial College London, London, UK

²⁰MRC-PHE Centre for Environment and Health, Imperial College London, London, UK

Contributors EB drafted the paper, participated in designing the study and performed the statistical analysis. CJ and EL designed the study, participated in manuscript preparation and reviewed the paper on several stages. CJ also contributed to the statistical analysis. BB participated in data collection and reviewing the paper. ESA contributed to the statistical analysis and reviewed the paper. JG-A, AEC, FGR, KT, JH, DN, JLS, PD, SDA, RCN, VS, CR and DLJ. TG is the correspondence author, and he designed the study, participated in manuscript preparation and reviewed the paper on several stages.

Funding The ALEC Study is funded by the European Union's Horizon 2020 Research and Innovation programme under grant agreement No 633212.

Competing interests None declared.

Patient consent Detail has been removed from this case description/these case descriptions to ensure anonymity. The editors and reviewers have seen the detailed information available and are satisfied that the information backs up the case the authors are making.

Ethics approval Ethical approval for the study from local research ethics committees and written consent from participants were obtained.

Provenance and peer review Not commissioned; externally peer reviewed.

Data sharing statement No additional data available.

Open Access This is an Open Access article distributed in accordance with the Creative Commons Attribution Non Commercial (CC BY-NC 4.0) license, which permits others to distribute, remix, adapt, build upon this work non-commercially, and license their derivative works on different terms, provided the original work is properly cited and the use is non-commercial. See: <http://creativecommons.org/licenses/by-nc/4.0/>

© Article author(s) (or their employer(s) unless otherwise stated in the text of the article) 2017. All rights reserved. No commercial use is permitted unless otherwise expressly granted.

REFERENCES

- James PT, Leach R, Kalamara E, *et al.* The worldwide obesity epidemic. *Obes Res* 2001;9 Suppl 4:228S–33.
- Van Cauter E, Knutson KL. Sleep and the epidemic of obesity in children and adults. *Eur J Endocrinol* 2008;159 Suppl 1:S59–S66.
- National Sleep Foundation. *Sleep in America Poll*. Washington, DC: National Sleep Foundation, 2008.
- National Center for Health Statistics QuickStats: percentage of adults who reported an average of ≤ 6 hours of sleep per 24-hour period, by sex and age group – United States, 1985 and 2004. *MMWR Morb Mortal Wkly Re* 2005;54:933.
- Kripke DF, Simons RN, Garfinkel L, *et al.* Short and long sleep and sleeping pills. is increased mortality associated? *Arch Gen Psychiatry* 1979;36:103–16.
- Kripke DF, Garfinkel L, Wingard DL, *et al.* Mortality associated with sleep duration and insomnia. *Arch Gen Psychiatry* 2002;59:131–6.
- Patel SR, Ayas NT, Malhotra MR, *et al.* A prospective study of sleep duration and mortality risk in women. *Sleep* 2004;27:440–4.
- Al Lawati NM, Patel SR, Ayas NT. Epidemiology, risk factors, and consequences of obstructive sleep apnea and short sleep duration. *Prog Cardiovasc Dis* 2009;51:285–93.
- Badran M, Yassin BA, Fox N, *et al.* Epidemiology of Sleep Disturbances and Cardiovascular Consequences. *Can J Cardiol* 2015;31:873–9.
- Gottlieb DJ, Redline S, Nieto FJ, *et al.* Association of usual sleep duration with hypertension: the Sleep Heart Health Study. *Sleep* 2006;29:1009–14.
- Donley M, Mindel J, Pleister A, *et al.* Sleep Duration and metabolic syndrome: a Dose-Risk Meta-Analysis. *Am J Respir Crit Care Med* 2015;191:A2152.
- Buscemi D, Kumar A, Nugent R, *et al.* Short sleep times predict obesity in internal medicine clinic patients. *J Clin Sleep Med* 2007;3:681–8.
- Stranges S, Dorn JM, Shipley MJ, *et al.* Correlates of short and long sleep duration: a cross-cultural comparison between the United Kingdom and the United States: the Whitehall II Study and the western New York Health Study. *Am J Epidemiol* 2008;168:1353–64.
- Theorell-Haglöw J, Berglund L, Janson C, *et al.* Sleep duration and central obesity in women - differences between short sleepers and long sleepers. *Sleep Med* 2012;13:1079–85.
- Zhang S, Li L, Huang Y, *et al.* [Meta-analysis of prospective cohort studies about sleep duration and risk of weight gain and obesity in adults]. *Zhonghua Liu Xing Bing Xue Za Zhi* 2015;36:519–25.
- Schaub B, von Mutius E. Obesity and asthma, what are the links? *Curr Opin Allergy Clin Immunol* 2005;5:185–93.
- Guerra S, Sherrill DL, Bobadilla A, *et al.* The relation of body mass index to asthma, chronic bronchitis, and emphysema. *Chest* 2002;122:1256–63.
- Young T, Skatrud J, Peppard PE. Risk factors for obstructive sleep apnea in adults. *JAMA* 2004;291:2013–6.
- Murugan AT, Sharma G. Obesity and respiratory diseases. *Chron Respir Dis* 2008;5:233–42.
- Mebrahtu TF, Feltbower RG, Greenwood DC, *et al.* Childhood body mass index and wheezing disorders: a systematic review and meta-analysis. *Pediatr Allergy Immunol* 2015;26:62–72.
- Burney PG, Luczynska C, Chinn S, *et al.* The European Community Respiratory Health Survey. *Eur Respir J* 1994;7:954–60.
- Janson C, Anto J, Burney P, *et al.* European Community Respiratory Health Survey II. The European Community Respiratory Health survey: what are the main results so far? European Community Respiratory Health Survey II. *Eur Respir J* 2001;18:598–611.
- Johns MW. Reliability and factor analysis of the Epworth Sleepiness Scale. *Sleep* 1992;15:376–81.
- Patel SR, Sotres-Alvarez D, Castañeda SF, *et al.* Social and Health Correlates of Sleep Duration in a US Hispanic Population: results from the Hispanic Community Health Study/Study of Latinos. *Sleep* 2015;38:1515–22.
- Baffi CW, Wood L, Winnica D, *et al.* Metabolic syndrome and the lung. *Chest* 2016;149:1525–34.
- Klink M, Quan SF. Prevalence of reported sleep disturbances in a general adult population and their relationship to obstructive airways diseases. *Chest* 1987;91:540–6.
- Leng Y, Wainwright NW, Cappuccio FP, *et al.* Daytime napping and increased risk of incident respiratory diseases: symptom, marker, or risk factor? *Sleep Med* 2016;23:12–15.
- Klink ME, Dodge R, Quan SF. The relation of sleep complaints to respiratory symptoms in a general population. *Chest* 1994;105:151–4.
- Scharf SM, Maimon N, Simon-Tuval T, *et al.* Sleep quality predicts quality of life in chronic obstructive pulmonary disease. *Int J Chron Obstruct Pulmon Dis* 2010;6:1–12.
- Janson C, De Backer W, Gislason T, *et al.* Increased prevalence of sleep disturbances and daytime sleepiness in subjects with bronchial asthma: a population study of young adults in three european countries. *Eur Respir J* 1996;9:2132–8.
- Janson C, Gislason T, Boman G, *et al.* Sleep disturbances in patients with asthma. *Respir Med* 1990;84:37–42.

32. Choi JH, Nam GE, Kim DH, *et al.* Association between sleep duration and the prevalence of atopic dermatitis and asthma in young adults. *Asian Pac J Allergy Immunol* 2016.
33. Jensen ME, Gibson PG, Collins CE, *et al.* Increased sleep latency and reduced sleep duration in children with asthma. *Sleep Breath* 2013;17:281–7.
34. Dodge R, Cline MG, Quan SF. The natural history of insomnia and its relationship to respiratory symptoms. *Arch Intern Med* 1995;155:1797–800.
35. Taylor DJ, Mallory LJ, Lichstein KL, *et al.* Comorbidity of chronic insomnia with medical problems. *Sleep* 2007;30:213–8.
36. Björnsdóttir E, Janson C, Gislason T, *et al.* Insomnia in untreated sleep apnea patients compared to controls. *J Sleep Res* 2012;21:131–8.
37. Björnsdóttir E, Janson C, Arnardóttir E, *et al.* Symptoms of insomnia among OSA patients before and after 2 years of PAP treatment. *Sleep Med* 2013;14:e74.
38. Emilsson OI, Janson C, Benediktsdóttir B, *et al.* Nocturnal gastroesophageal reflux, lung function and symptoms of obstructive sleep apnea: results from an epidemiological survey. *Respir Med* 2012;106:459–66.
39. Chin K, Oga T, Takahashi K, *et al.* Associations between obstructive sleep apnea, metabolic syndrome, and sleep duration, as measured with an actigraph, in an urban male working population in Japan. *Sleep* 2010;33:89–95.
40. Arnardóttir ES, Björnsdóttir E, Olafsdóttir KA, *et al.* Obstructive sleep apnoea in the general population: highly prevalent but minimal symptoms. *Eur Respir J* 2016;47:194–202.
41. Patel SR, Malhotra A, Gottlieb DJ, *et al.* Correlates of long sleep duration. *Sleep* 2006;29:881–9.
42. Sivertsen B, Øverland S, Pallesen S, *et al.* Insomnia and long sleep duration are risk factors for later work disability. The Hordaland Health Study. *J Sleep Res* 2009;18:122–8.
43. Vgontzas AN, Papanicolaou DA, Bixler EO, *et al.* Elevation of plasma cytokines in disorders of excessive daytime sleepiness: role of sleep disturbance and obesity. *J Clin Endocrinol Metab* 1997;82:1313–6.
44. Williams CJ, Hu FB, Patel SR, *et al.* Sleep duration and snoring in relation to biomarkers of cardiovascular disease risk among women with type 2 diabetes. *Diabetes Care* 2007;30:1233–40.
45. Irwin MR, Olmstead R, Carroll JE. Sleep disturbance, Sleep Duration, and inflammation: a systematic review and Meta-Analysis of Cohort Studies and experimental Sleep Deprivation. *Biol Psychiatry* 2016;80:40–52.

Respiratory symptoms are more common among short sleepers independent of obesity

Erla Björnsdóttir, Christer Janson, Eva Lindberg, Erna Sif Arnardóttir, Bryndís Benediktsdóttir, Judith Garcia-Aymerich, Anne Elie Carsin, Francisco Gómez Real, Kjell Torén, Joachim Heinrich, Dennis Nowak, José Luis Sánchez-Ramos, Pascal Demoly, Sandra Dorado Arenas, Ramon Coloma Navarro, Vivi Schlünssen, Chantal Raheerison, Debbie L Jarvis and Thorarinn Gislason

BMJ Open Resp Res 2017 4:
doi: [10.1136/bmjresp-2017-000206](https://doi.org/10.1136/bmjresp-2017-000206)

Updated information and services can be found at:
<http://bmjopenrespres.bmj.com/content/4/1/e000206>

These include:

References

This article cites 43 articles, 5 of which you can access for free at:
<http://bmjopenrespres.bmj.com/content/4/1/e000206#BIBL>

Open Access

This is an Open Access article distributed in accordance with the Creative Commons Attribution Non Commercial (CC BY-NC 4.0) license, which permits others to distribute, remix, adapt, build upon this work non-commercially, and license their derivative works on different terms, provided the original work is properly cited and the use is non-commercial. See: <http://creativecommons.org/licenses/by-nc/4.0/>

Email alerting service

Receive free email alerts when new articles cite this article. Sign up in the box at the top right corner of the online article.

Topic Collections

Articles on similar topics can be found in the following collections

[Sleep](#) (2)

Notes

To request permissions go to:
<http://group.bmj.com/group/rights-licensing/permissions>

To order reprints go to:
<http://journals.bmj.com/cgi/reprintform>

To subscribe to BMJ go to:
<http://group.bmj.com/subscribe/>