

Appendices B and C for “Revisiting the massive star-forming complex RCW 122: New millimeter and submillimeter study”

Authors: N. U. Duronea, L. Bronfman, M. Ortega, L. A. Suad,
G. Baume, E. Mendoza, M. Carvajal, S. Cichowolski,
E. M. Arnal, R. Finger, M. Merello, and R. Gamen

26 June 2024

B Spectra of detected transitions

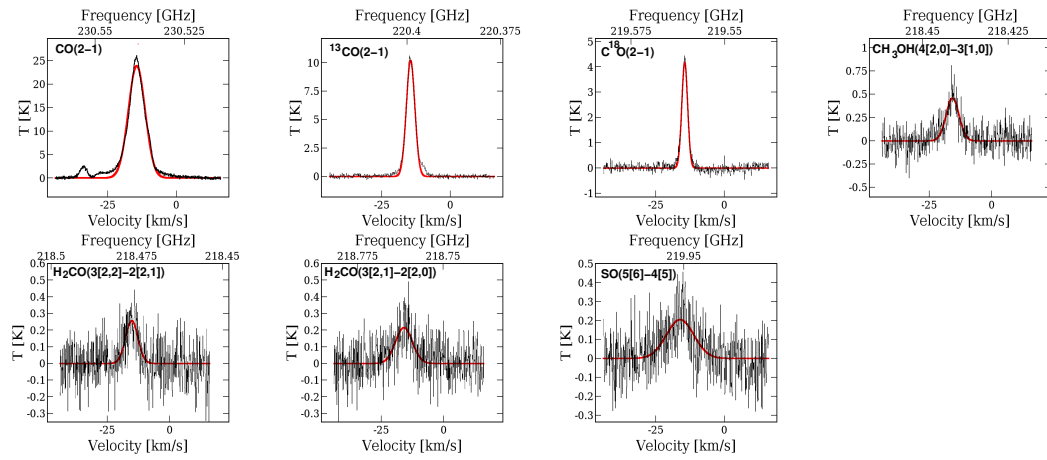


Figure B.1: Observed spectra of detected transitions in clump A in T_{mb} . The transitions are indicated in the top left corner of each panel. The red curves show the Gaussian fits to the lines.

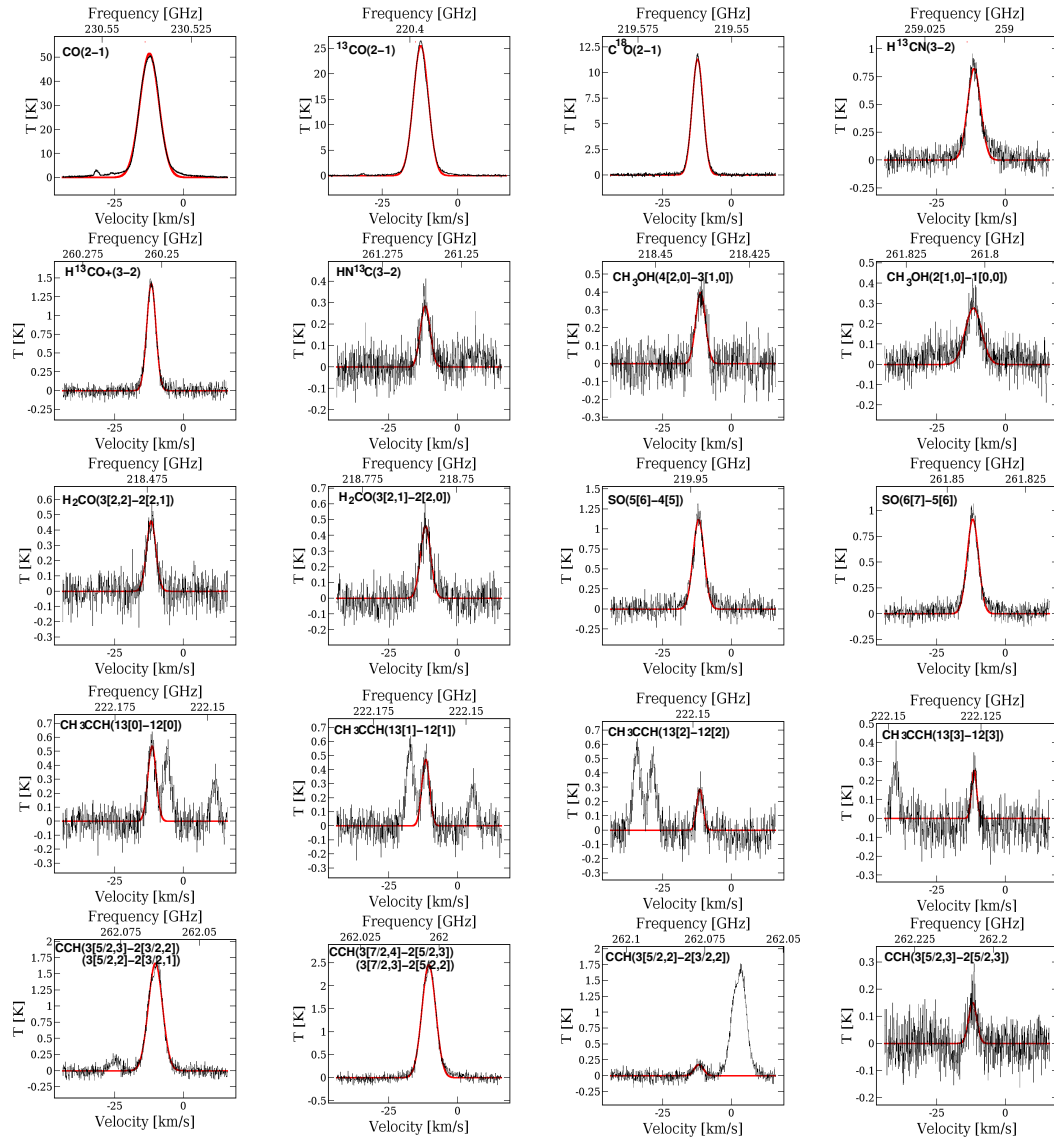


Figure B.2: Observed spectra of detected transitions in clump B in T_{mb} . The transitions are indicated in the top left corner of each panel. The red curves show the Gaussian fits to the lines.

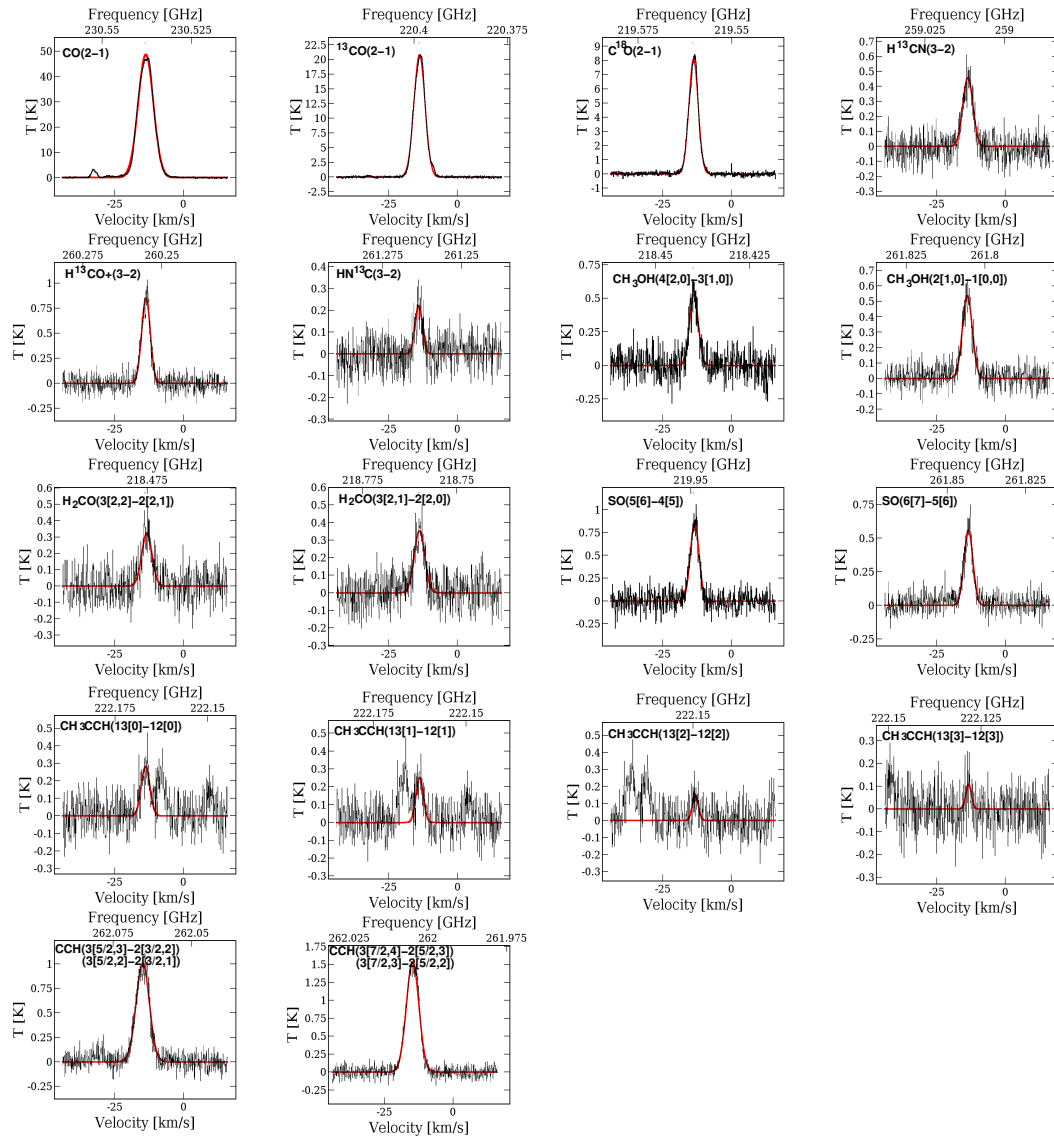


Figure B.3: Observed spectra of detected transitions in clump C in T_{mb} . The transitions are indicated in the top left corner of each panel. The red curves show the Gaussian fits to the lines.

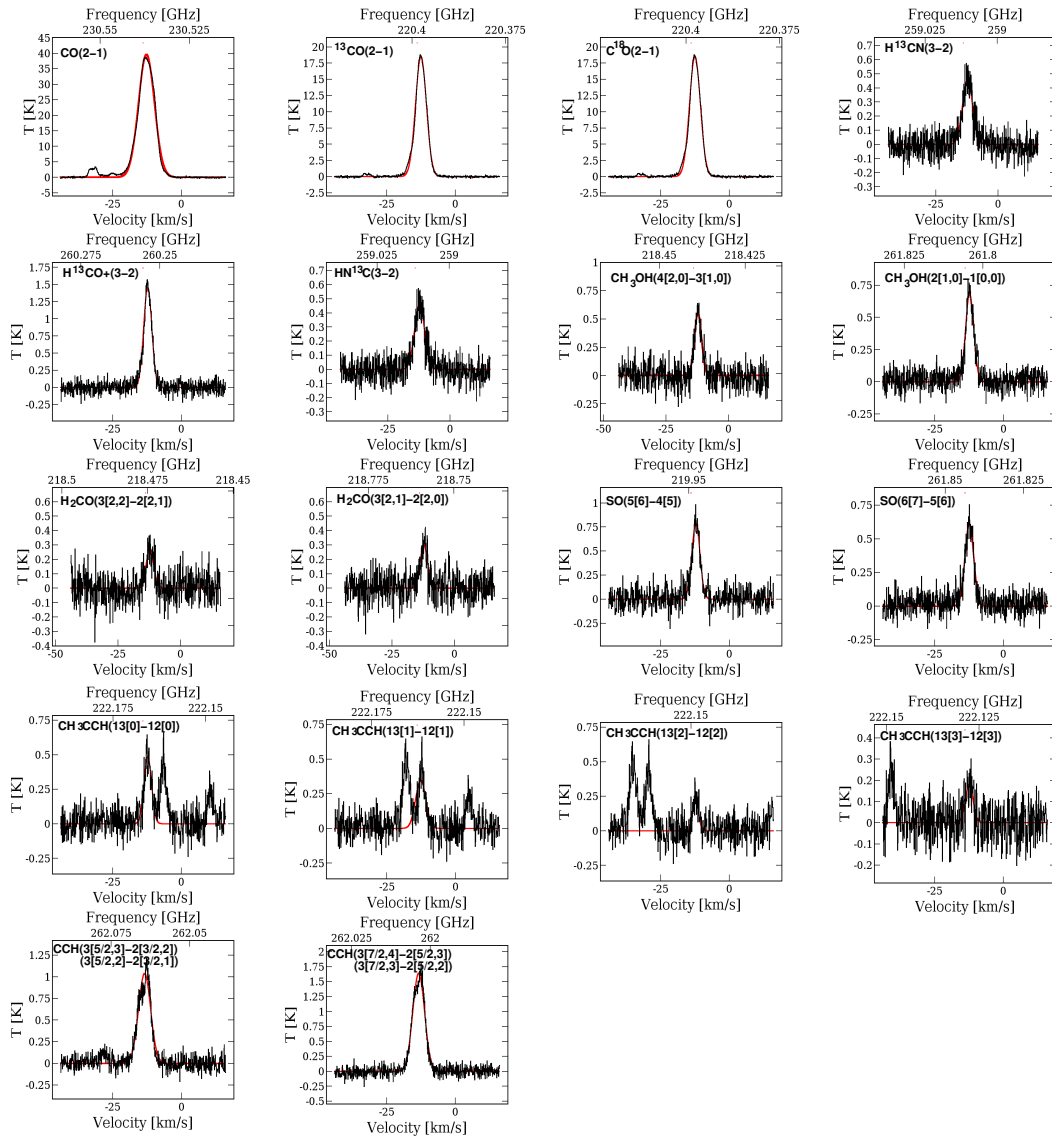


Figure B.4: Observed spectra of detected transitions in clump D in T_{mb} . The transitions are indicated in the top left corner of each panel. The red curves show the Gaussian fits to the lines.

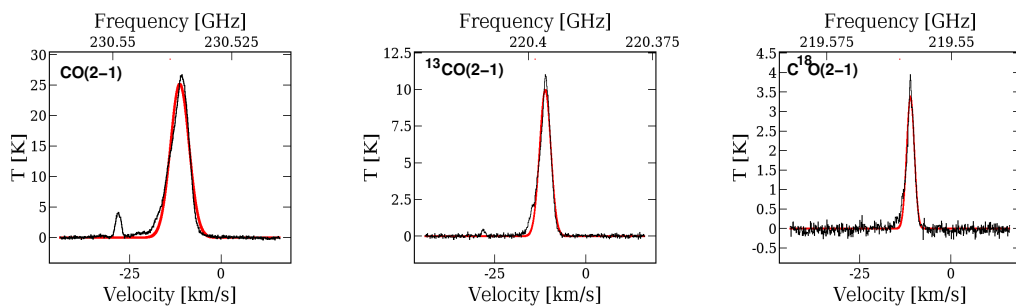


Figure B.5: Observed spectra of detected transitions in clump E in T_{mb} . The transitions are indicated in the top left corner of each panel. The red curves show the Gaussian fits to the lines.

C Zeroth-order moment maps of detected transitions

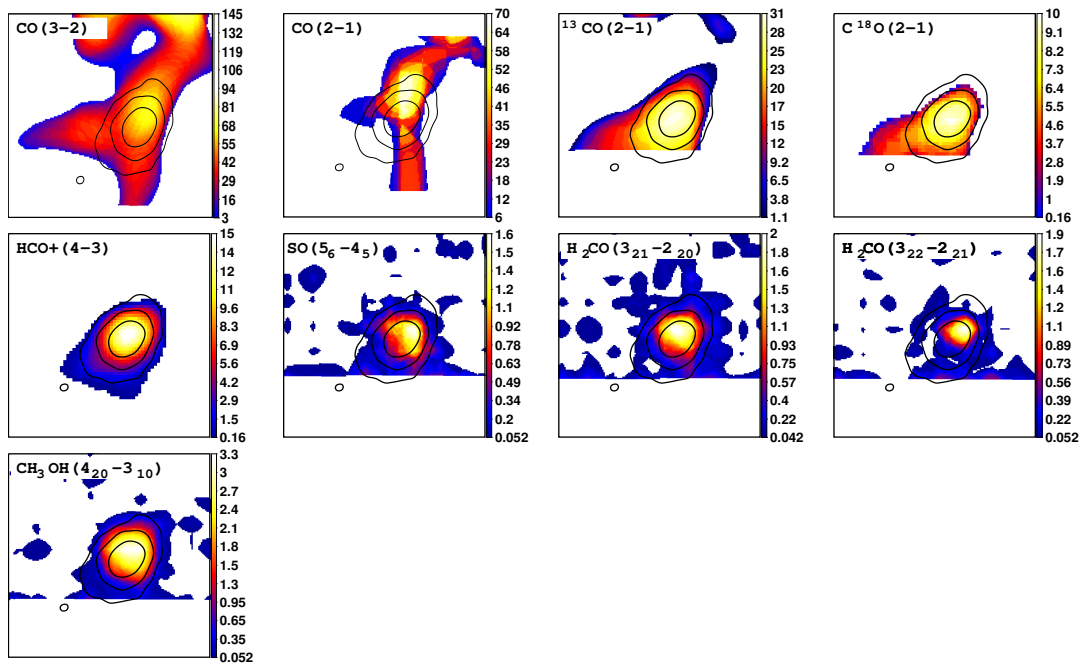


Figure C.1: Zeroth-order moment maps of molecular lines detected for clump A (color tonalities, in K km s^{-1}), superimposed onto the $870 \mu\text{m}$ emission (black contours, as presented in Fig. 1)

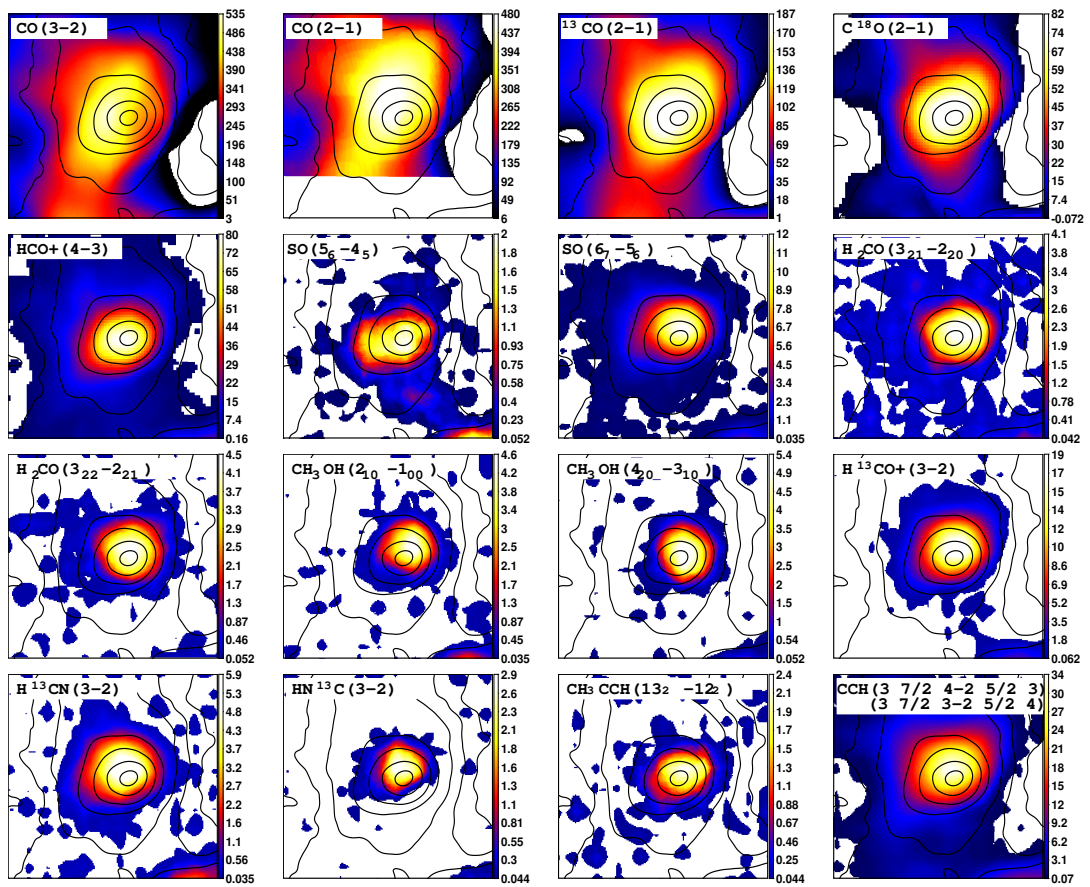


Figure C.2: Zeroth-order moment maps of molecular lines detected for clump B (color tonalities, in K km s^{-1}), superimposed onto the $870 \mu\text{m}$ emission (black contours, as presented in Fig. 1)

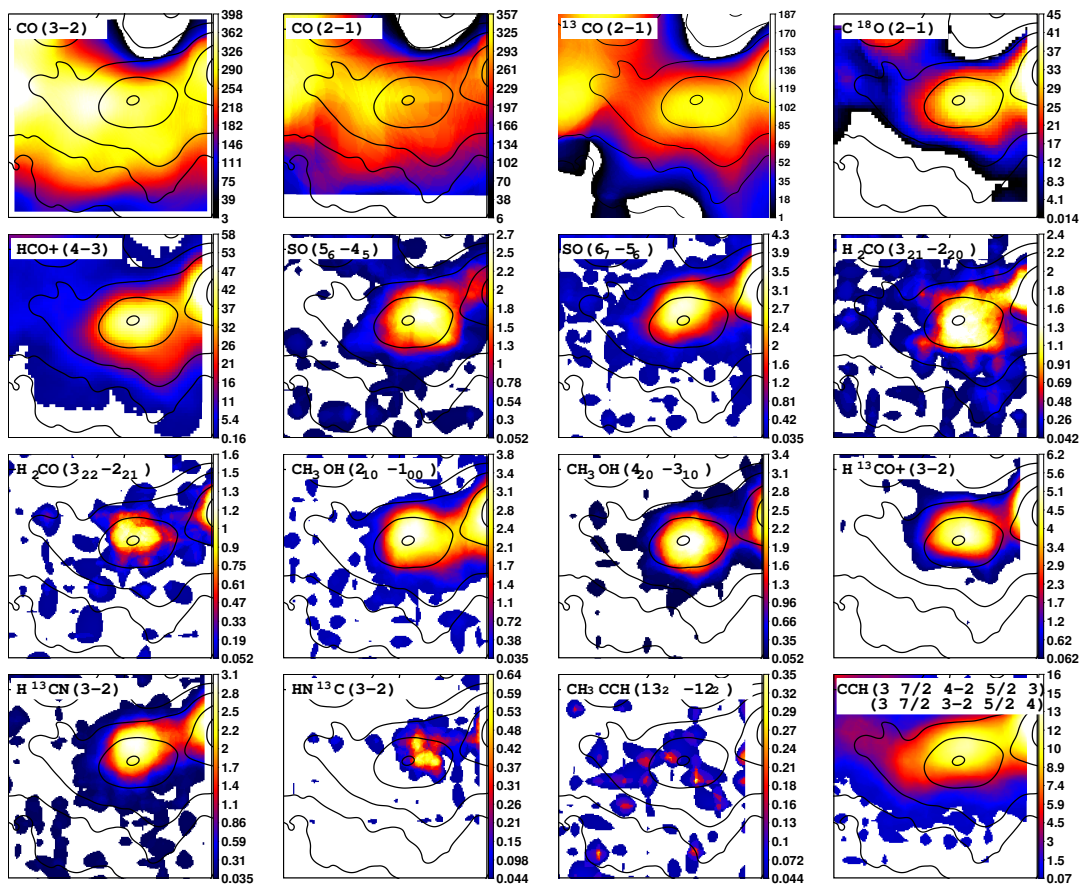


Figure C.3: Zeroth-order moment maps of molecular lines detected for clump C (color tonalities, in K km s^{-1}), superimposed onto the $870 \mu\text{m}$ emission (black contours, as presented in Fig. 1)

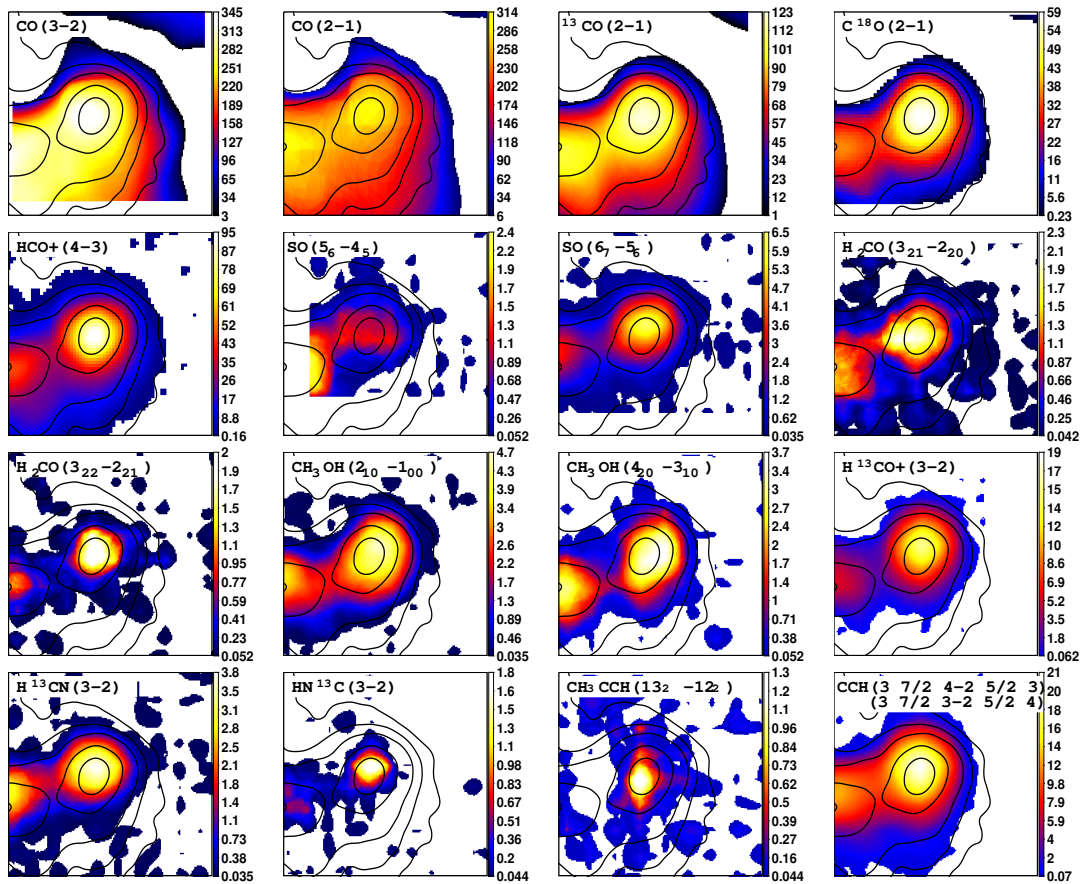


Figure C.4: Zeroth-order moment maps of molecular lines detected for clump D (color tonalities, in K km s^{-1}), superimposed onto the $870 \mu\text{m}$ emission (black contours, as presented in Fig. 1)

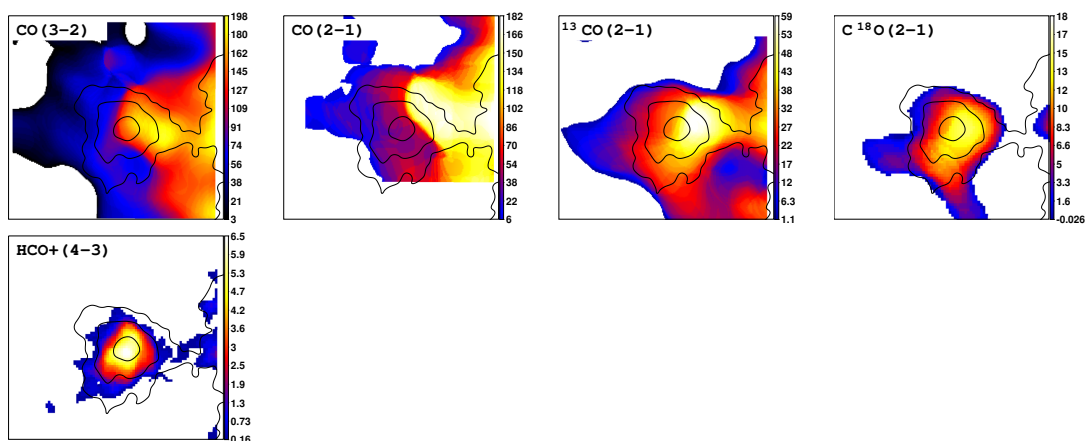


Figure C.5: Zeroth-order moment maps of molecular lines detected for clump E (color tonalities, in K km s^{-1}), superimposed onto the $870 \mu\text{m}$ emission (black contours, as presented in Fig. 1)